

MITOCHONDRIAL RIBOSOMAL PROTEIN L11 RABBIT MAB

货号: N262519

产品全名: Mitochondrial Ribosomal Protein L11 兔单克隆抗体

基因符号 MRPL11; CGI-113; 39S ribosomal protein L11; mitochondrial; L11mt; MRP-L11

UNIPROT ID: Q9Y3B7

背景: This nuclear gene encodes a 39S subunit component of the mitochondrial ribosome. Alternative splicing results in multiple transcript variants. Pseudogenes for this gene are found on chromosomes 5 and 12.

抗原: A synthetic peptide of human Mitochondrial ribosomal protein L11

经过测试的应用: WB,IHC-F,IHC-P,ICC/IF

推荐稀释比: WB: 1/500-1/1000 IHC: 1/50-1/100 IF: 1/50-1/200

种属反应性: Rabbit

克隆性: Rabbit Monoclonal

克隆编号: R06-4H1

分子量: Calculated MW: 21 kDa; Observed MW: 21 kDa

亚型: IgG

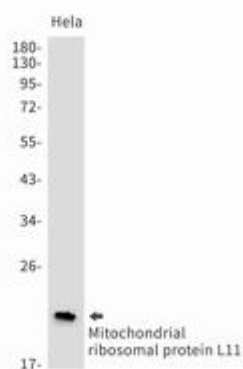
纯化: Affinity Purified

种属反应性: Human

成分: PBS (without Mg²⁺ and Ca²⁺), pH 7.3 containing 50% glycerol, 0.5% BSA and 0.02% sodium azide

研究领域: Cell Biology

储存和运输: Store at -20°C. Avoid repeated freezing and thawing



Western blot analysis of Mitochondrial ribosomal protein L11 in HeLa lysates using Mitochondrial Ribosomal Protein L11 antibody.



Product Description

Pioneering GTPase and Oncogene Product Development since 2010
