

MITOCHONDRIAL FISSION 1 PROTEIN RABBIT MAB

货号: N263034

产品全名: Mitochondrial Fission 1 Protein 兔单克隆抗体

基因符号 CGI135; FIS1; hFis1; TTC 11

UNIPROT ID: Q9Y3D6

背景: Promotes the fragmentation of the mitochondrial network and its perinuclear clustering. Can induce cytochrome c release from the mitochondrion to the cytosol, ultimately leading to apoptosis. Also mediates peroxisomal fission.

抗原: A synthetic peptide of human TTC11

经过测试的应用: WB,IHC-F,IHC-P,ICC/IF

推荐稀释比: WB: 1/500-1/1000 IHC: 1/50-1/100 IF: 1/50-1/200

种属反应性: Rabbit

克隆性: Rabbit Monoclonal

克隆编号: R02-8G8

分子量: Calculated MW: 17 kDa; Observed MW: 17 kDa

亚型: IgG

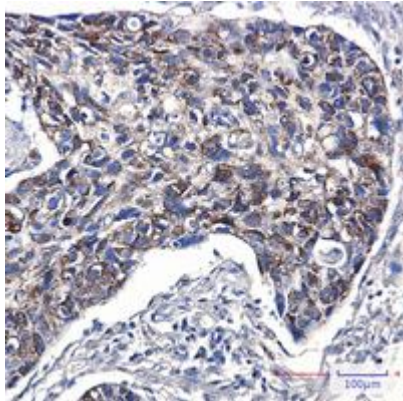
纯化: Affinity Purified

种属反应性: Human

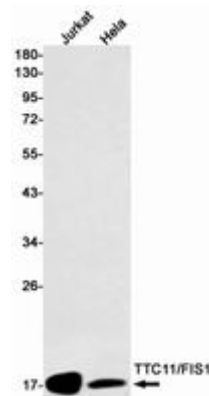
成分: PBS (without Mg²⁺ and Ca²⁺), pH 7.3 containing 50% glycerol, 0.5% BSA and 0.02% sodium azide

研究领域: Cell Biology

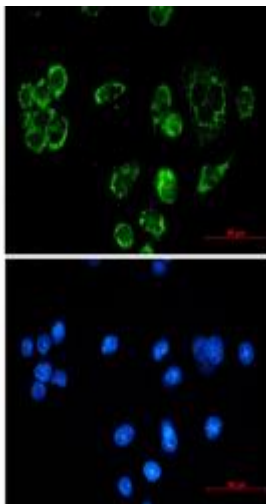
储存和运输: Store at -20°C. Avoid repeated freezing and thawing



Immunohistochemistry analysis of paraffin-embedded Human lung cancer using TTC11 antibody. High-pressure and temperature Sodium Citrate pH 6.0 was used for antigen retrieval.



Western blot analysis of TTC11/FIS1 in Jurkat, Hela lysates using Sodium Mitochondrial Fission 1 Protein antibody.



Immunocytochemistry analysis of TTC11/FIS1 (green) in MCF-7 using TTC11/FIS1 antibody, and DAPI (blue)