

MIIP RABBIT PAB

货号: S221828

产品全名: MIIP 兔多抗

基因符号 IIP45

UNIPROT ID: Q5JXC2 (Gene Accession - NP_068752)

背景: This gene encodes a protein that interacts with the oncogene protein insulin-like growth factor binding protein 2 and may function as an inhibitor of cell migration and invasion. This protein also interacts with the cell division protein 20 and may be involved in regulating mitotic progression. This protein may function as a tumor suppressor by inhibiting the growth of certain cancers.

抗原: Synthetic peptide of human MIIP

经过测试的应用: ELISA, IHC

推荐稀释比: IHC: 30-150; ELISA: 5000-10000

种属反应性: Rabbit

克隆性: Rabbit Polyclonal

亚型: Immunogen-specific rabbit IgG

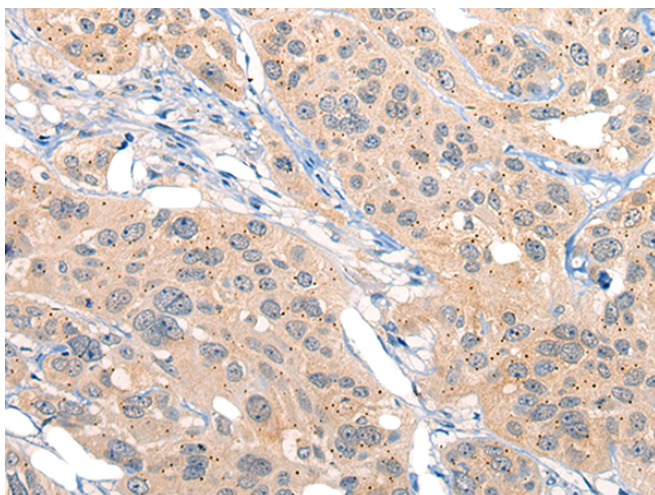
纯化: Antigen affinity purification

种属反应性: Human

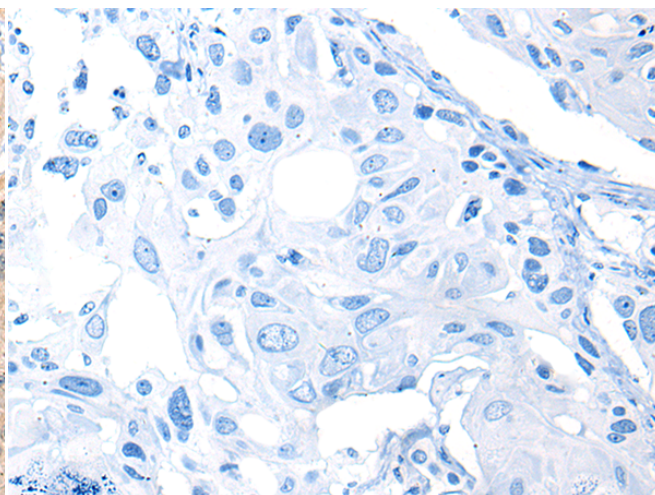
成分: PBS (without Mg²⁺ and Ca²⁺), pH 7.4, 150 mM NaCl, 0.05% Sodium Azide and 40% glycerol

研究领域: Signal Transduction, Neuroscience

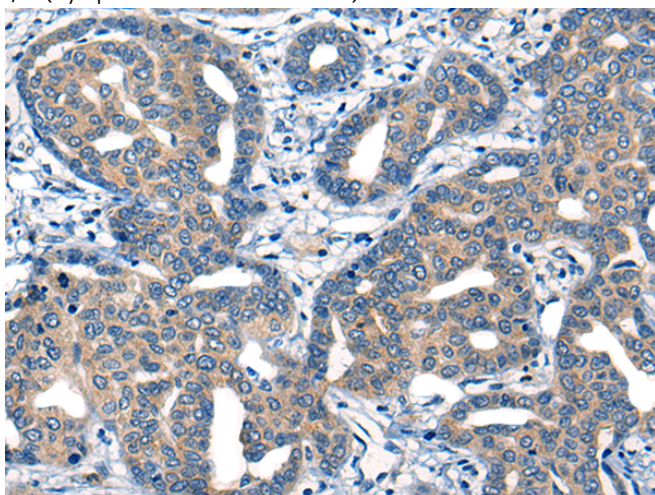
储存和运输: Store at -20°C. Avoid repeated freezing and thawing



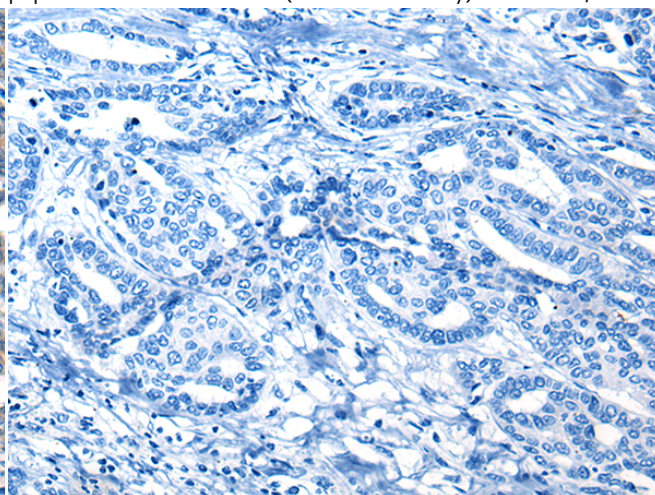
Immunohistochemistry analysis of paraffin embedded Human esophagus cancer tissue using 221828(MIIP Antibody) at a dilution of 1/45(Cytoplasm and Cell membrane).



In comparison with the IHC on the left, the same paraffin-embedded Human esophagus cancer tissue is first treated with the synthetic peptide and then with 221828(Anti-MIIP Antibody) at dilution 1/45.



The image on the left is immunohistochemistry of paraffin-embedded Human liver cancer tissue using 221828(Anti-MIIP Antibody) at a dilution of 1/45.



In comparison with the IHC on the left, the same paraffin-embedded Human liver cancer tissue is first treated with synthetic peptide and then with D263590(Anti-MIIP Antibody) at dilution 1/45.



Product Description

Pioneering GTPase and Oncogene Product Development since 2010
