

MID2 RABBIT PAB

货号: S219518

产品全名: MID2 兔多抗

基因符号: FXY2; RNF60; TRIM1; MRX101

UNIPROT ID: Q9UJV3 (Gene Accession - BC017707)

背景: The protein encoded by this gene is a member of the tripartite motif (TRIM) family. The TRIM motif includes three zinc-binding domains, a RING, a B-box type 1 and a B-box type 2, and a coiled-coil region. The protein localizes to microtubular structures in the cytoplasm. Alternate splicing of this gene results in two transcript variants encoding different isoforms.

抗原: Fusion protein of human MID2

经过测试的应用: ELISA, IHC

推荐稀释比: IHC: 100-300; ELISA: 5000-10000

种属反应性: Rabbit

克隆性: Rabbit Polyclonal

亚型: Immunogen-specific rabbit IgG

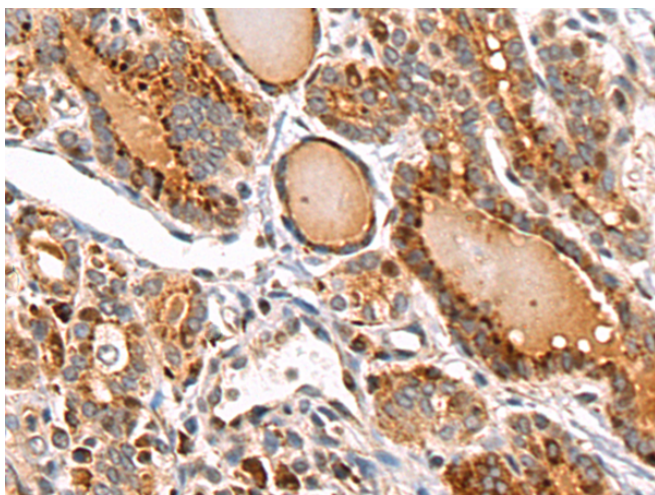
纯化: Antigen affinity purification

种属反应性: Human, Mouse

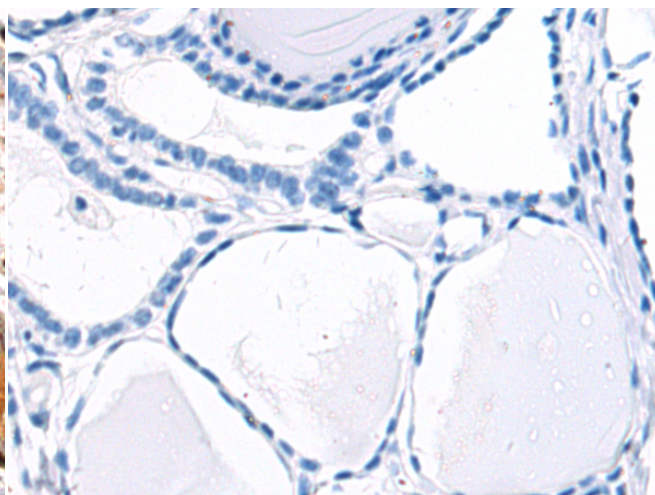
成分: PBS (without Mg²⁺ and Ca²⁺), pH 7.4, 150 mM NaCl, 0.05% Sodium Azide and 40% glycerol

研究领域: Neuroscience, Signal Transduction, Epigenetics and Nuclear Signaling

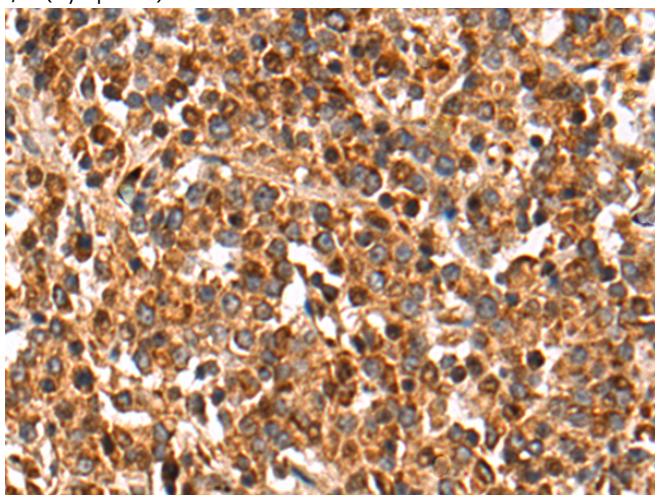
储存和运输: Store at -20°C. Avoid repeated freezing and thawing



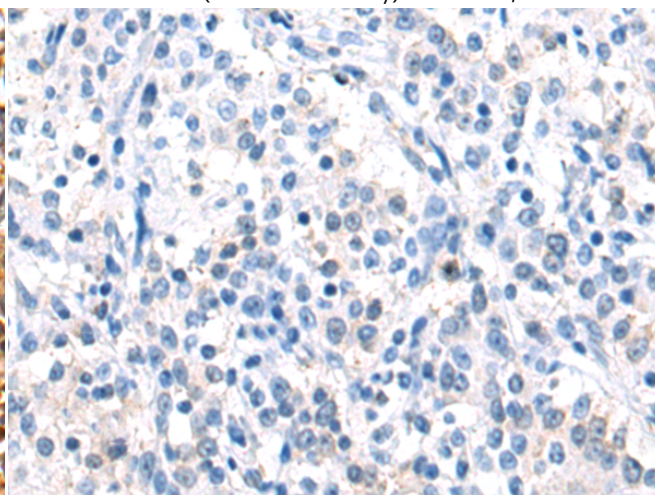
Immunohistochemistry analysis of paraffin embedded Human thyroid cancer tissue using 219518(MID2 Antibody) at a dilution of 1/95(Cytoplasm).



In comparison with the IHC on the left, the same paraffin-embedded Human thyroid cancer tissue is first treated with the fusion protein and then with 219518(Anti-MID2 Antibody) at dilution 1/95.



The image on the left is immunohistochemistry of paraffin-embedded Human gastric cancer tissue using 219518(Anti-MID2 Antibody) at a dilution of 1/95.



In comparison with the IHC on the left, the same paraffin-embedded Human gastric cancer tissue is first treated with fusion protein and then with D227456(Anti-MID2 Antibody) at dilution 1/95.



Product Description

Pioneering GTPase and Oncogene Product Development since 2010
