

MIA2 RABBIT PAB

货号: N225048

产品全名: MIA2 兔多抗

基因符号 Melanoma inhibitory activity protein 2

UNIPROT ID: Q96PC5

背景: Plays a role in the transport of cargos that are too large to fit into COPII-coated vesicles and require specific mechanisms to be incorporated into membrane-bound carriers and exported from the endoplasmic reticulum.

抗原: Synthesized peptide derived from MIA2 at AA range: 361-410

经过测试的应用: WB,IHC-P,ELISA

推荐稀释比: WB: 1/500-1/1000 ELISA: 1/10000

种属反应性: Rabbit

克隆性: Rabbit Polyclonal

分子量: Calculated MW: 160 kDa; Observed MW: 65 kDa

亚型: IgG

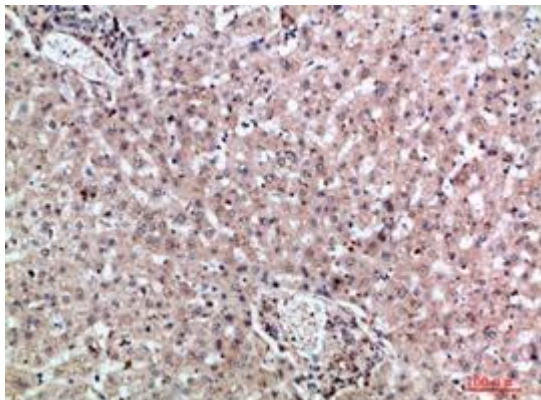
纯化: Affinity Purified

种属反应性: Human

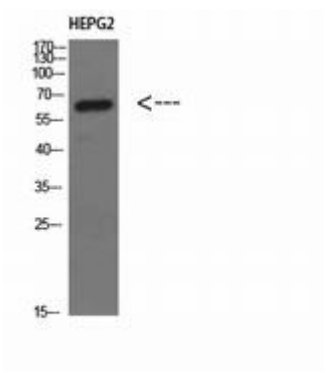
成分: PBS (without Mg²⁺ and Ca²⁺), pH 7.3 containing 50% glycerol, 0.5% BSA and 0.02% sodium azide

研究领域: Immunology

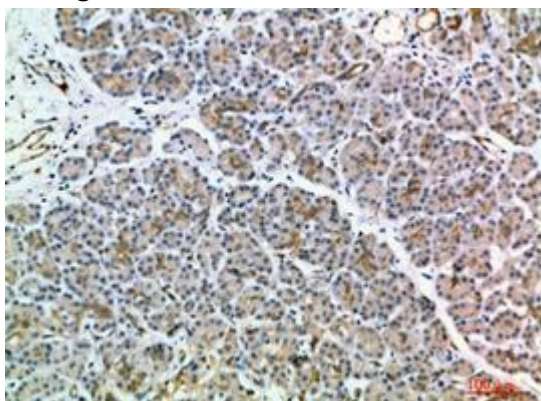
储存和运输: Store at -20°C. Avoid repeated freezing and thawing



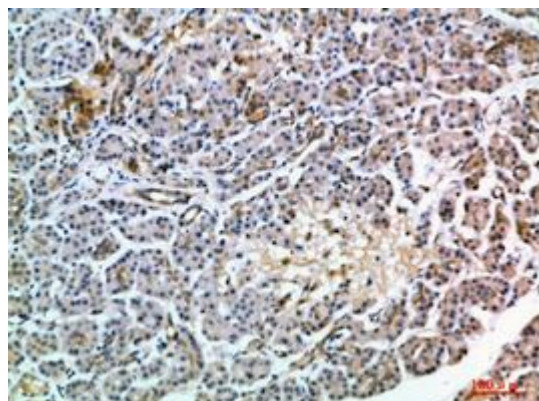
Immunohistochemistry analysis of paraffin-embedded Human liver using MIA2 antibody. High-pressure and temperature Sodium Citrate pH 6.0 was used for antigen retrieval.



Western blot analysis of MIA2 in HEPG2 lysates using MIA2 antibody.



Immunohistochemistry analysis of paraffin-embedded Human pancreas using MIA2 antibody. High-pressure and temperature Sodium Citrate pH 6.0 was used for antigen retrieval.



Immunohistochemistry analysis of paraffin-embedded Human pancreas using MIA2 antibody. High-pressure and temperature Sodium Citrate pH 6.0 was used for antigen retrieval.