

MFSD2A RABBIT PAB

货号: S220706

产品全名: MFSD2A 兔多抗

基因符号 NLS1; MFSD2; MCPH15; SLC59A1; NEDMISBA

UNIPROT ID: Q8NA29 (Gene Accession - NP_001129965)

背景: The protein encoded by this gene is a transmembrane protein and sodium-dependent lysophosphatidylcholine transporter. The encoded protein is involved in the establishment of the blood-brain barrier and is required for brain growth and function. Defects in this gene are a cause of a progressive microcephaly syndrome.

抗原: Synthetic peptide of human MFSD2A

经过测试的应用: ELISA, WB, IHC

推荐稀释比: IHC: 50-200;WB: 500-2000;ELISA: 5000-10000

种属反应性: Rabbit

克隆性: Rabbit Polyclonal

亚型: Immunogen-specific rabbit IgG

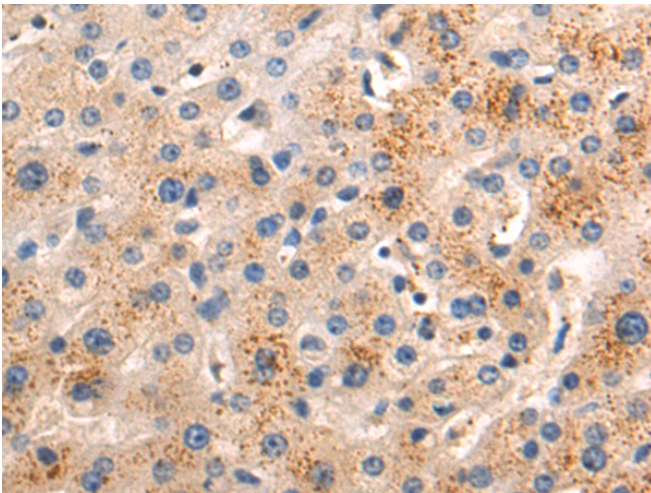
纯化: Antigen affinity purification

种属反应性: Human, Mouse

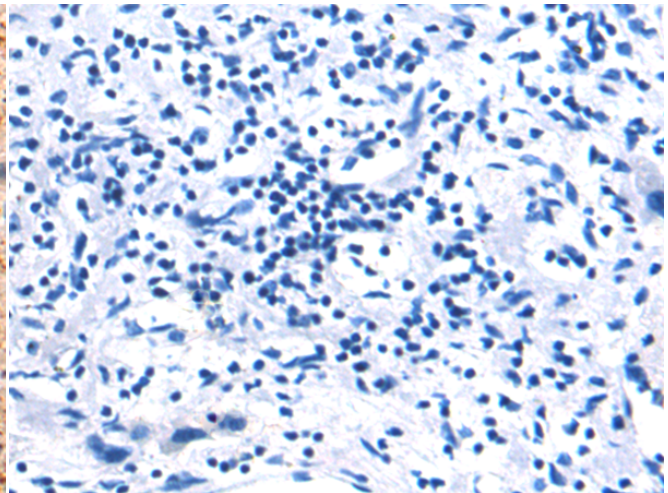
成分: PBS (without Mg²⁺ and Ca²⁺), pH 7.4, 150 mM NaCl, 0.05% Sodium Azide and 40% glycerol

研究领域: Cancer, Neuroscience

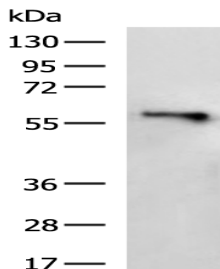
储存和运输: Store at -20°C. Avoid repeated freezing and thawing



Immunohistochemistry analysis of paraffin embedded Human liver cancer tissue using 220706(MFSD2A Antibody) at a dilution of 1/50(Cytoplasm).



In comparison with the IHC on the left, the same paraffin-embedded Human liver cancer tissue is first treated with the synthetic peptide and then with 220706(Anti-MFSD2A Antibody) at dilution 1/50.



Gel: 8%SDS-PAGE, Lysate: 40 µg;

Lane: Human placenta tissue lysate;

Primary antibody: 220706(MFSD2A Antibody) at dilution 1/500;

Secondary antibody: HRP-conjugated Goat anti rabbit IgG at 1/5000 dilution;

Exposure time: 1 minute