

## METRS RABBIT MAB

货号: N262489

产品全名: MetRS 兔单克隆抗体

基因符号 MRS; ILLD; CMT2U; ILFS2; METRS; MTRNS; SPG70

**UNIPROT ID:** P56192

背景: Catalyzes the specific attachment of an amino acid to its cognate tRNA in a 2 step reaction: the amino acid (AA) is first activated by ATP to form AA-AMP and then transferred to the acceptor end of the tRNA.

抗原: A synthetic peptide of human MARS

经过测试的应用: WB,IHC-F,IHC-P,ICC/IF,IP

推荐稀释比: WB: 1/500-1/1000 IHC: 1/50-1/100 IF: 1/50-1/200 IP: 1/20

种属反应性: Rabbit

克隆性: Rabbit Monoclonal

克隆编号: R03-3D4

分子量: Calculated MW: 101 kDa; Observed MW: 101 kDa

亚型: IgG

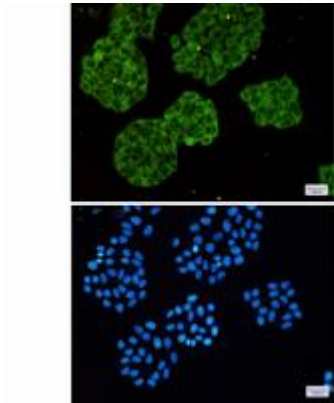
纯化: Affinity Purified

种属反应性: Human,Rat

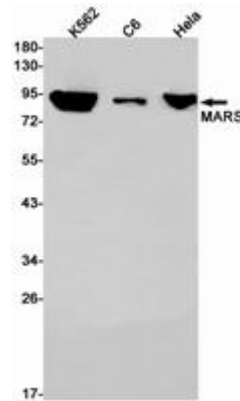
成分: PBS (without Mg<sup>2+</sup> and Ca<sup>2+</sup>), pH 7.3 containing 50% glycerol, 0.5% BSA and 0.02% sodium azide

研究领域: Signal Transduction

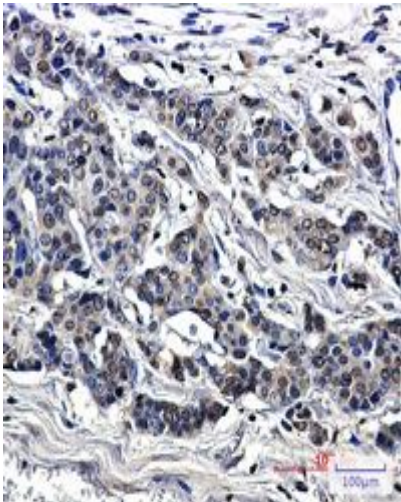
储存和运输: Store at -20°C. Avoid repeated freezing and thawing



Immunocytochemistry analysis of MARS (green) in Hela using MARS antibody, and DAPI (blue)



Western blot analysis of MARS in K562, C6, Hela lysates using MetRS antibody.



Immunohistochemistry analysis of paraffin-embedded Human breast cancer using MetRS/MARS antibody. High-pressure and temperature Sodium Citrate pH 6.0 was used for antigen retrieval.