

METHYLMALONYL COENZYME A MUTASE RABBIT MAB

货号: N262513

产品全名: Methylmalonyl Coenzyme A mutase 兔单克隆抗体

基因符号 MCM

UNIPROT ID: P22033

背景: Involved in the degradation of several amino acids, odd-chain fatty acids and cholesterol via propionyl-CoA to the tricarboxylic acid cycle. MCM has different functions in other species.

抗原: A synthetic peptide of human Methylmalonyl Coenzyme A mutase

经过测试的应用: WB,IHC-P

推荐稀释比: WB: 1/500-1/1000 IHC: 1/50-1/100

种属反应性: Rabbit

克隆性: Rabbit Monoclonal

克隆编号: R05-3G4

分子量: Calculated MW: 83 kDa; Observed MW: 83 kDa

亚型: IgG

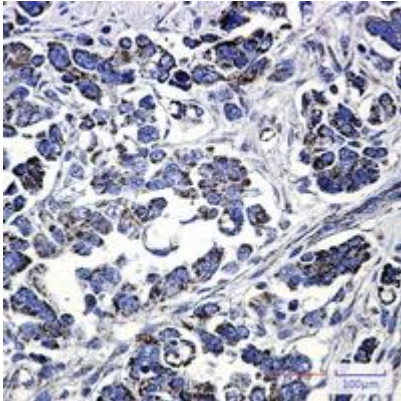
纯化: Affinity Purified

种属反应性: Human,Rat

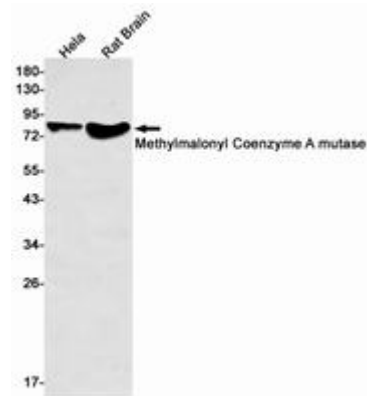
成分: PBS (without Mg²⁺ and Ca²⁺), pH 7.3 containing 50% glycerol, 0.5% BSA and 0.02% sodium azide

研究领域: Signal Transduction

储存和运输: Store at -20°C. Avoid repeated freezing and thawing



Immunohistochemistry analysis of paraffin-embedded Human Cholangiocarcinoma using Methylmalonyl Coenzyme A mutase antibody. High-pressure and temperature Sodium Citrate pH 6.0 was used for antigen retrieval.



Western blot analysis of Methylmalonyl Coenzyme A mutase in Hela, rat Brain lysates using Methylmalonyl Coenzyme A mutase antibody.