

## METALLOPROTEINASE INHIBITOR 1 RABBIT PAB

货号: N225408

产品全名: Metalloproteinase Inhibitor 1 兔多抗

基因符号 TIMP1; CLGI; TIMP; Metalloproteinase inhibitor 1; Erythroid-potentiating activity; EPA; Fibroblast collagenase inhibitor; Collagenase inhibitor; Tissue inhibitor of metalloproteinases 1; TIMP-1

**UNIPROT ID:** P01033

背景: TIMP1 Complexes with metalloproteinases (such as collagenases) and irreversibly inactivates them by binding to their catalytic zinc cofactor. Also mediates erythropoiesis in vitro; but, unlike IL-3, it is species-specific, stimulating the growth and differentiation of only human and murine erythroid progenitors. Known to act on MMP-1, MMP-2, MMP-3, MMP-7, MMP-8, MMP-9, MMP-10, MMP-11, MMP-12, MMP-13 and MMP-16.

抗原: The antiserum was produced against synthesized peptide derived from human TIMP1. AA range:61-110

经过测试的应用: ICC/IF, WB, IHC-F, IHC-P, ELISA

推荐稀释比: WB: 1/500-1/1000 IHC: 1/50-1/100 IF: 1/50-1/200 ELISA: 1/10000

种属反应性: Rabbit

克隆性: Rabbit Polyclonal

分子量: Calculated MW: 23 kDa; Observed MW: 23 kDa

亚型: IgG

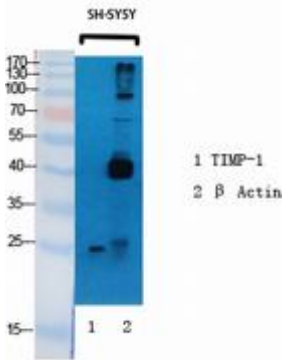
纯化: Affinity Purified

种属反应性: Human, Mouse and Rat

成分: PBS (without Mg<sup>2+</sup> and Ca<sup>2+</sup>), pH 7.3 containing 50% glycerol, 0.5% BSA and 0.02% sodium azide

研究领域: Cardiovascular

储存和运输: Store at -20°C. Avoid repeated freezing and thawing



Western blot analysis of Metalloproteinase Inhibitor 1 in various lysates using Metalloproteinase Inhibitor 1 antibody.