

MESOTHELIN RABBIT MAB

货号: N262509

产品全名: Mesothelin 兔单克隆抗体

基因符号 Pre-pro-megakaryocyte-potentiating factor; MPF

UNIPROT ID: Q61468

背景: Membrane-anchored forms may play a role in cellular adhesion.

抗原: Recombinant protein of mouse Mesothelin

经过测试的应用: WB,IP

推荐稀释比: WB: 1/500-1/1000 IP: 1/20

种属反应性: Rabbit

克隆性: Rabbit Monoclonal

克隆编号: R09-4G5

分子量: Calculated MW: 70 kDa; Observed MW: 40,70 kDa

亚型: IgG

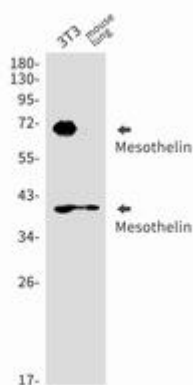
纯化: Affinity Purified

种属反应性: Mouse

成分: PBS (without Mg²⁺ and Ca²⁺), pH 7.3 containing 50% glycerol, 0.5% BSA and 0.02% sodium azide

研究领域: Tags & Cell Markers

储存和运输: Store at -20°C. Avoid repeated freezing and thawing



Western blot analysis of Mesothelin in 3T3, mouse lung lysates using Mesothelin antibody.