

## MELATONIN RECEPTOR 1A RABBIT PAB

货号: N225511

产品全名: Melatonin Receptor 1A 兔多抗

基因符号 MTNR1A; Melatonin receptor type 1A; Mel-1A-R; Mella receptor

**UNIPROT ID:** P48039

**背景:** This gene encodes one of two high affinity forms of a receptor for melatonin, the primary hormone secreted by the pineal gland. This receptor is a G-protein coupled, 7-transmembrane receptor that is responsible for melatonin effects on mammalian circadian rhythm and reproductive alterations affected by day length. The receptor is an integral membrane protein that is readily detectable and localized to two specific regions of the brain. The hypothalamic suprachiasmatic nucleus appears to be involved in circadian rhythm while the hypophysial pars tuberalis may be responsible for the reproductive effects of melatonin.

**抗原:** synthesized peptide of human MTR1A. AA range:191-240

**经过测试的应用:** ICC/IF,ELISA

**推荐稀释比:** IF: 1/50-1/200 ELISA: 1/10000

**种属反应性:** Rabbit

**克隆性:** Rabbit Polyclonal

**分子量:** -

**亚型:** IgG

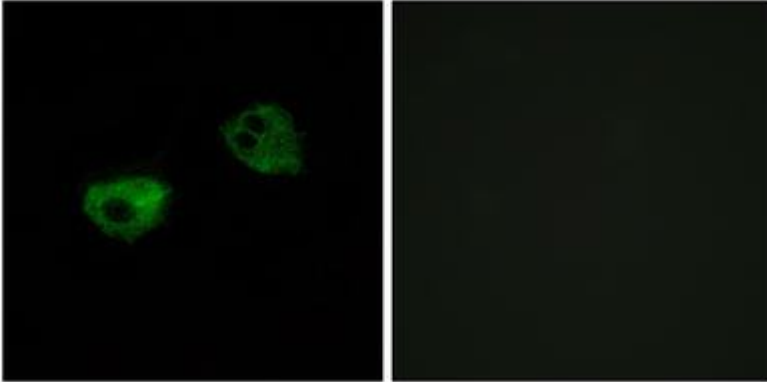
**纯化:** Affinity Purified

**种属反应性:** Human, Mouse and Rat

**成分:** PBS (without Mg<sup>2+</sup> and Ca<sup>2+</sup>), pH 7.3 containing 50% glycerol, 0.5% BSA and 0.02% sodium azide

**研究领域:** Neuroscience

**储存和运输:** Store at -20°C. Avoid repeated freezing and thawing



Immunofluorescence analysis of Melatonin Receptor 1A in HepG2 cells using Melatonin Receptor 1A antibody. Sample with blocking peptide on the right.