

MEK3 RABBIT PAB

货号: N225726

产品全名: MEK3 兔多抗

基因符号 AW212142; dual specificity mitogen activated protein kinase kinase 3; Dual specificity mitogen activated protein kinase kinase 6; Dual specificity mitogen-activated protein kinase kinase 3; MAP kinase kinase 3; MAP kinase kinase 6; map2k3; MAP2K6; MAPK ERK kinase 3; MAPK/ERK kinase 3; MAPK/ERK kinase 6; MAPKK 3; MAPKK 6; MAPKK3; MAPKK6; MEK 3; MEK 6; MEK3; Mitogen activated protein kinase kinase 3; Mitogen activated protein kinase kinase 6; MKK 3; MKK3; MKK6; mMKK3b; MP2K3_HUMAN; PRKMK 3; PRKMK3; PRKMK6; Protein kinase; mitogen activated; kinase 6 (MAP kinase kinase 6); protein kinase; mitogen-activated; kinase 3; SAPK kinase 2; SAPKK 2; SAPKK 3; SAPKK-2; SAPKK2; SAPKK3; Stress activated protein kinase kinase 2; Stress activated protein kinase kinase 3; Stress-activated protein kinase kinase 2.

UNIPROT ID: P46734

背景: Dual specificity kinase. Is activated by cytokines and environmental stress in vivo. Catalyzes the concomitant phosphorylation of a threonine and a tyrosine residue in the MAP kinase p38.

抗原: A synthesized peptide derived from human MEK3

经过测试的应用: WB,IHC-P,ICC/IF,IP,FC

推荐稀释比: WB: 1/500-1/1000 IHC: 1/50-1/100 IF: 1/50-1/200 IP: 1/20 FC: 1/50-1/100

种属反应性: Rabbit

克隆性: Rabbit Polyclonal

分子量: Calculated MW: 39 kDa; Observed MW: 39 kDa

亚型: IgG

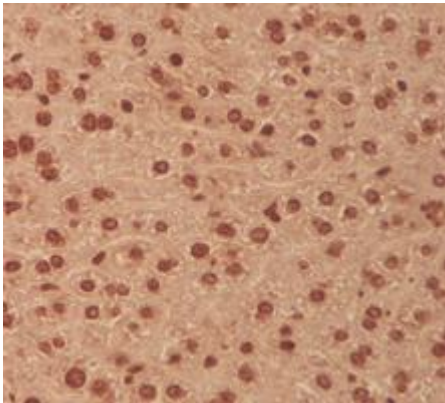
纯化: Affinity Chromatography

种属反应性: Human, Mouse and Rat

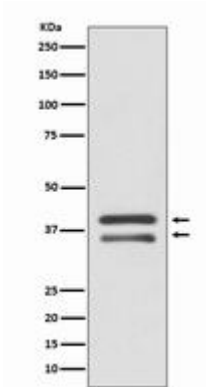
成分: PBS (without Mg²⁺ and Ca²⁺), pH 7.3 containing 50% glycerol, 0.5% BSA and 0.02% sodium azide

研究领域: Signal Transduction

储存和运输: Store at -20°C. Avoid repeated freezing and thawing



Immunohistochemistry analysis of paraffin-embedded Human liver using MEK3 antibody. High-pressure and temperature Sodium Citrate pH 6.0 was used for antigen retrieval.



Western blot analysis of MEK3 in HepG2 lysates using MEK3 antibody.