

MEK3/MEK6 RABBIT MAB

货号: N263620

产品全名: MEK3/MEK6 兔单克隆抗体

基因符号 MEK6; MKK6; MAPKK6; PRKMK6; SAPKK3; MAP2K6; MEK3; MAP kinase kinase 3; MAPKK3; MAPK/ERK kinase 3

UNIPROT ID: P46734/P52564

背景: Dual specificity kinase. Is activated by cytokines and environmental stress in vivo. Catalyzes the concomitant phosphorylation of a threonine and a tyrosine residue in the MAP kinase p38.

抗原: A synthesized peptide derived from human MEK3/MEK6

经过测试的应用: WB,ICC/IF,IP

推荐稀释比: WB: 1/500-1/1000 IF: 1/50-1/200 IP: 1/20

种属反应性: Rabbit

克隆性: Rabbit Monoclonal

克隆编号: R04-210

分子量: Calculated MW: 39,37 kDa; Observed MW: 39,37 kDa

亚型: IgG

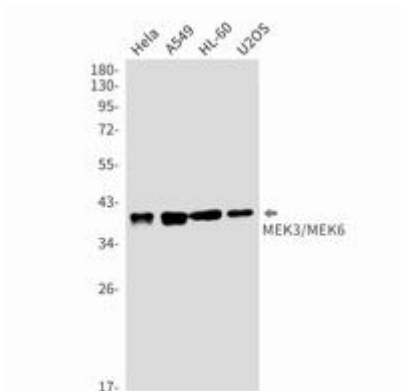
纯化: Affinity Purified

种属反应性: Human,Mouse

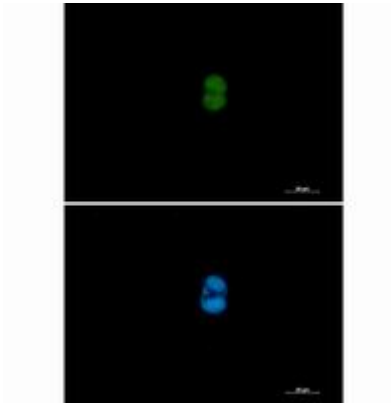
成分: PBS (without Mg²⁺ and Ca²⁺), pH 7.3 containing 50% glycerol, 0.5% BSA and 0.02% sodium azide

研究领域: Signal Transduction

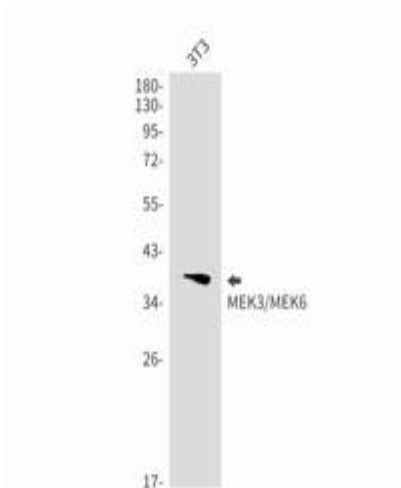
储存和运输: Store at -20°C. Avoid repeated freezing and thawing



Western blot analysis of MEK3/MEK6 in HeLa, A549, HL-60, U2OS lysates using MEK3/MEK6 antibody



Immunocytochemistry analysis of MEK3/MEK6 (green) in HCT116 using MEK3/MEK6 antibody, and DAPI (blue).



Western blot analysis of MEK3/MEK6 in 3T3 lysates using MEK3/MEK6 antibody. Observed band size: 39, 37 kDa.