

MEK2 RABBIT MAB

货号: N263421

产品全名: MEK2 兔单克隆抗体

基因符号 MAP2K2; MEK2; MKK2; PRKMK2; Dual specificity mitogen-activated protein kinase kinase 2; MAP kinase kinase 2; MAPKK 2; ERK activator kinase 2; MAPK/ERK kinase 2; MEK 2

UNIPROT ID: P36507

背景: Catalyzes the concomitant phosphorylation of a threonine and a tyrosine residue in a Thr-Glu-Tyr sequence located in MAP kinases. Activates the ERK1 and ERK2 MAP kinases.

抗原: A synthetic peptide of human MEK2

经过测试的应用: WB,IHC-F,IHC-P,ICC/IF,IP

推荐稀释比: WB: 1/500-1/1000 IHC: 1/50-1/100 IF: 1/50-1/200 IP: 1/20

种属反应性: Rabbit

克隆性: Rabbit Monoclonal

克隆编号: R05-2G7

分子量: Calculated MW: 44 kDa; Observed MW: 44 kDa

亚型: IgG

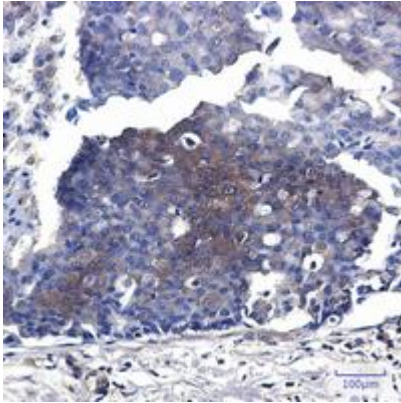
纯化: Affinity Purified

种属反应性: Human,Mouse

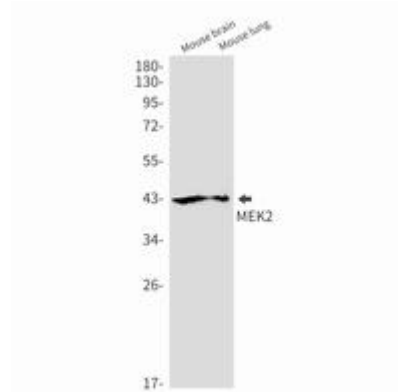
成分: PBS (without Mg²⁺ and Ca²⁺), pH 7.3 containing 50% glycerol, 0.5% BSA and 0.02% sodium azide

研究领域: Signal Transduction

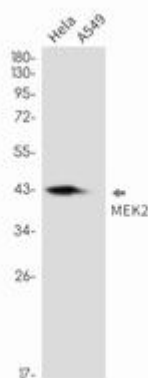
储存和运输: Store at -20°C. Avoid repeated freezing and thawing



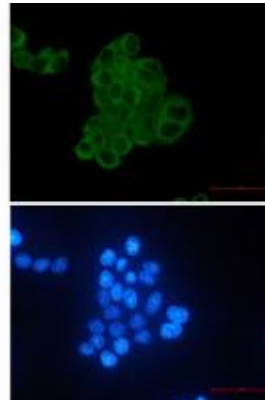
Immunohistochemistry analysis of paraffin-embedded Human breast cancer using MEK2 antibody. High-pressure and temperature Sodium Citrate pH 6.0 was used for antigen retrieval.



Western blot analysis of MEK2 in mouse brain, mouse lung lysates using MEK2 antibody.



Western blot analysis of MEK2 in HeLa, A549 lysates using MEK2 antibody.



Immunocytochemistry analysis of MEK2 (green) in HeLa using MEK2 antibody, and DAPI (blue).