

## MEIS1 RABBIT PAB

货号: S220704

产品全名: MEIS1 兔多抗

基因符号

**UNIPROT ID:** O00470 (Gene Accession - NP\_002389)

**背景:** Homeobox genes, of which the most well-characterized category is represented by the HOX genes, play a crucial role in normal development. In addition, several homeoproteins are involved in neoplasia. This gene encodes a homeobox protein belonging to the TALE ('three amino acid loop extension') family of homeodomain-containing proteins.

**抗原:** Synthetic peptide of human MEIS1

**经过测试的应用:** ELISA, IHC

**推荐稀释比:** IHC: 50-200; ELISA: 2000-5000

**种属反应性:** Rabbit

**克隆性:** Rabbit Polyclonal

**亚型:** Immunogen-specific rabbit IgG

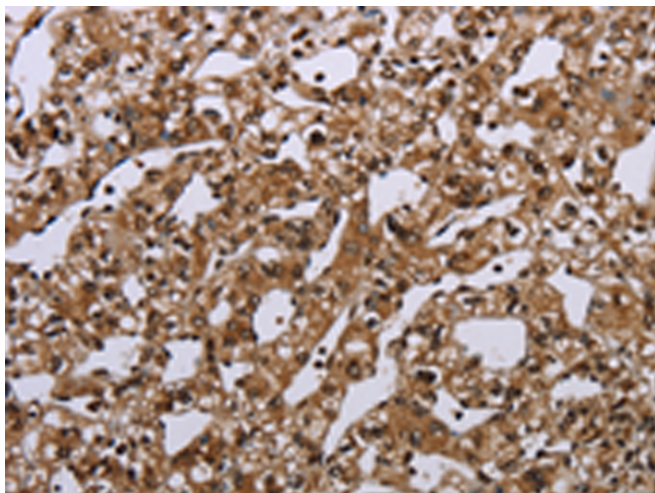
**纯化:** Antigen affinity purification

**种属反应性:** Human, Mouse

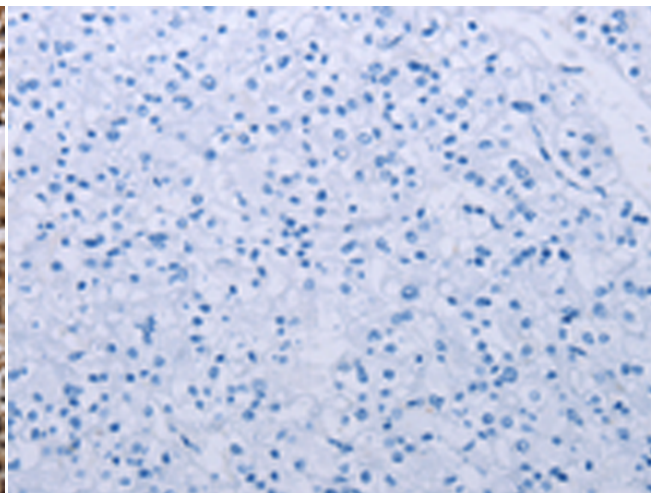
**成分:** PBS (without Mg<sup>2+</sup> and Ca<sup>2+</sup>), pH 7.4, 150 mM NaCl, 0.05% Sodium Azide and 40% glycerol

**研究领域:** Epigenetics and Nuclear Signaling, Stem Cells

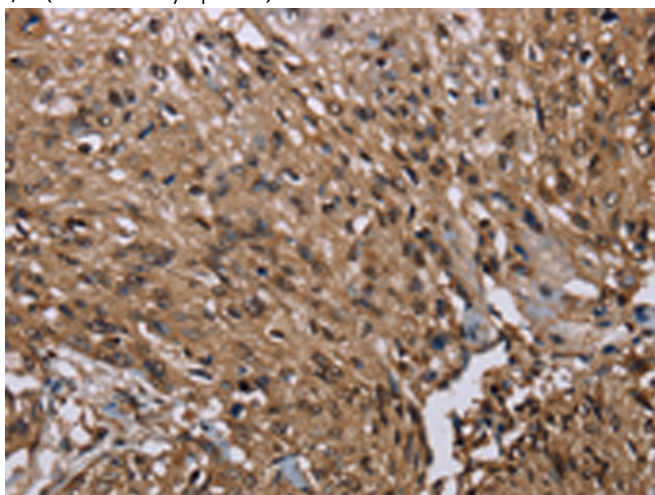
**储存和运输:** Store at -20°C. Avoid repeated freezing and thawing



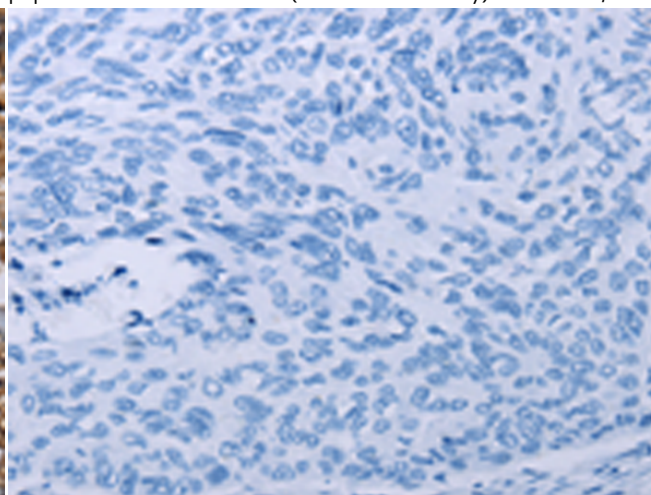
Immunohistochemistry analysis of paraffin embedded Human prostate cancer tissue using 220704 (MEIS1 Antibody) at a dilution of 1/40 (Nucleus or Cytoplasm).



In comparison with the IHC on the left, the same paraffin-embedded Human prostate cancer tissue is first treated with the synthetic peptide and then with 220704 (Anti-MEIS1 Antibody) at dilution 1/40.



The image on the left is immunohistochemistry of paraffin-embedded Human esophagus cancer tissue using 220704 (Anti-MEIS1 Antibody) at a dilution of 1/40.



In comparison with the IHC on the left, the same paraffin-embedded Human esophagus cancer tissue is first treated with synthetic peptide and then with 220704 (Anti-MEIS1 Antibody) at dilution 1/40.



# Product Description

Pioneering GTPase and Oncogene Product Development since 2010

---