

MEI1 RABBIT PAB

货号: S217598

产品全名: MEI1 兔多抗

基因符号: SPATA38

UNIPROT ID: Q5TIA1 (Gene Accession - BC032248)

背景: The predominant cause of spermatogenic arrest of meiosis is the failure of homologous chromosomes to accurately synapse. MEI1 (Meiosis inhibitor protein 1), also designated Meiosis defective protein 1, is a 1274 amino acid protein that is likely required for the formation of genetically programmed double-strand breaks, the first step in the initiation of meiosis. With predominant expression in testis, it is likely that defects of the gene encoding MEI1 results in male infertility. Interestingly, studies show that genetic variation in the MEI1 gene possibly predisposes European Americans but not Israeli men to infertility by meiotic arrest. Human MEI1 shares 79% sequence similarity with its mouse homolog. There are seven isoforms of MEI1 that are produced as a result of alternative splicing events.

抗原: Fusion protein of human MEI1

经过测试的应用: ELISA, IHC

推荐稀释比: IHC: 25-100; ELISA: 1000-2000

种属反应性: Rabbit

克隆性: Rabbit Polyclonal

亚型: Immunogen-specific rabbit IgG

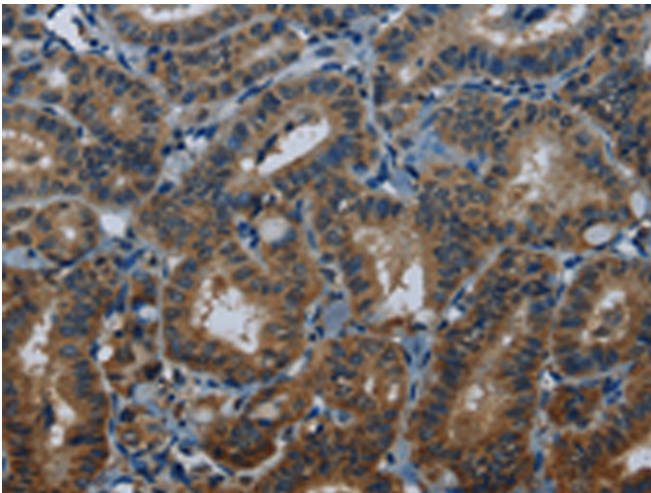
纯化: Antigen affinity purification

种属反应性: Human

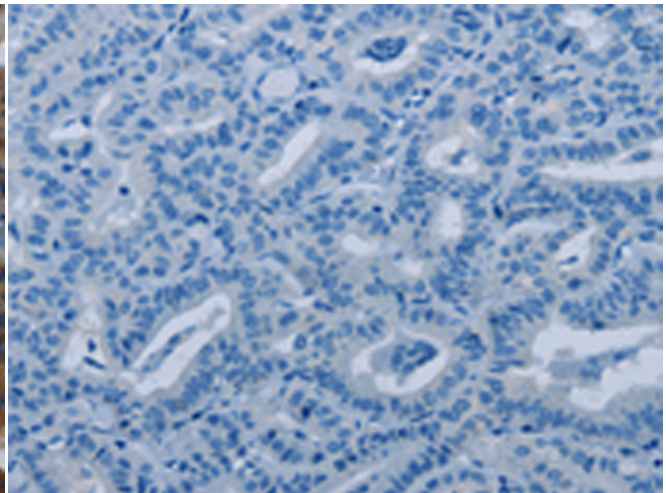
成分: PBS (without Mg²⁺ and Ca²⁺), pH 7.4, 150 mM NaCl, 0.05% Sodium Azide and 40% glycerol

研究领域: Cancer, Stem Cells

储存和运输: Store at -20°C. Avoid repeated freezing and thawing



Immunohistochemistry analysis of paraffin embedded Human thyroid cancer tissue using 217598 (MEI1 Antibody) at a dilution of 1/20 (Cytoplasm).



In comparison with the IHC on the left, the same paraffin-embedded Human thyroid cancer tissue is first treated with the fusion protein and then with 217598 (Anti-MEI1 Antibody) at dilution 1/20.