

MEF2C RABBIT PAB

货号: S221464

产品全名: MEF2C 兔多抗

基因符号: NEDHS1L; DEL5q14.3; C5DELq14.3

UNIPROT ID: Q06413 (Gene Accession - NP_002388)

背景: This locus encodes a member of the MADS box transcription enhancer factor 2 (MEF2) family of proteins, which play a role in myogenesis. The encoded protein, MEF2 polypeptide C, has both trans-activating and DNA binding activities. This protein may play a role in maintaining the differentiated state of muscle cells. Mutations and deletions at this locus have been associated with severe cognitive disability, stereotypic movements, epilepsy, and cerebral malformation. Alternatively spliced transcript variants have been described.

抗原: Synthetic peptide of human MEF2C

经过测试的应用: ELISA, IHC

推荐稀释比: IHC: 50-100; ELISA: 5000-10000

种属反应性: Rabbit

克隆性: Rabbit Polyclonal

亚型: Immunogen-specific rabbit IgG

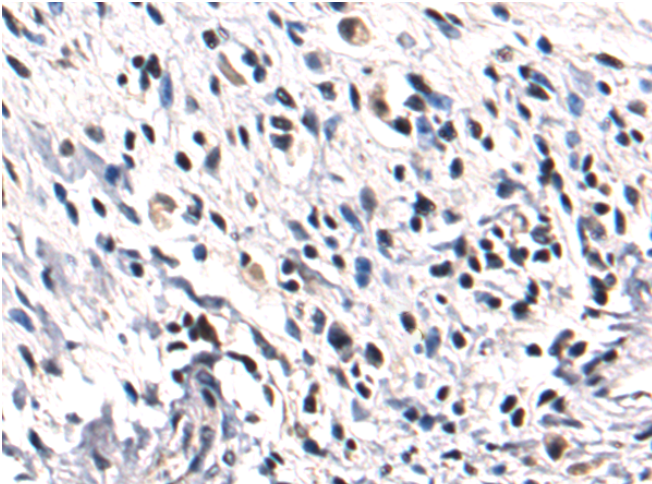
纯化: Antigen affinity purification

种属反应性: Human, Mouse, Rat

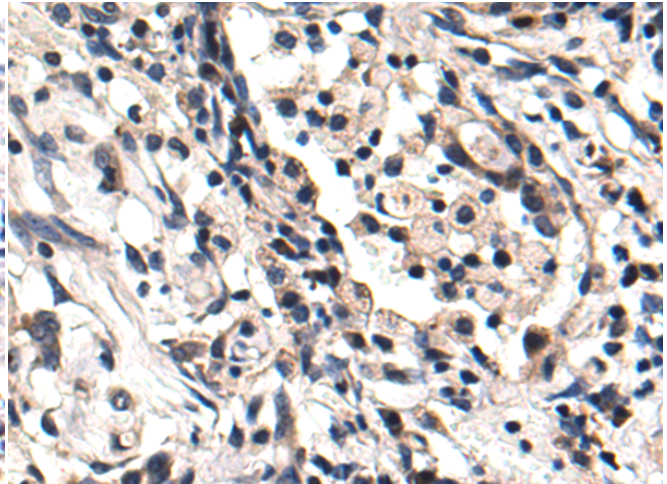
成分: PBS (without Mg²⁺ and Ca²⁺), pH 7.4, 150 mM NaCl, 0.05% Sodium Azide and 40% glycerol

研究领域: Signal Transduction, Epigenetics and Nuclear Signaling, Neuroscience, Cardiovascular, Stem Cells

储存和运输: Store at -20°C. Avoid repeated freezing and thawing



Immunohistochemistry analysis of paraffin-embedded Human esophagus cancer tissue using 221464 (MEF2C Antibody) at a dilution of 1/50 (Nucleus).



Immunohistochemistry analysis of paraffin-embedded Human thyroid cancer tissue using 221464 (Anti-MEF2C Antibody) at a dilution of 1/50.