

MEF2A RABBIT MAB

货号: N262502

产品全名: MEF2A 兔单克隆抗体

基因符号 mef2; ADCAD1; RSRFC4; RSRFC9

UNIPROT ID: Q02078

背景: Transcriptional activator which binds specifically to the MEF2 element, 5'-YTA[AT]4TAR-3', found in numerous muscle-specific genes. Also involved in the activation of numerous growth factor- and stress-induced genes. Mediates cellular functions not only in skeletal and cardiac muscle development, but also in neuronal differentiation and survival. Plays diverse roles in the control of cell growth, survival and apoptosis via p38 MAPK signaling in muscle-specific and/or growth factor-related transcription. In cerebellar granule neurons, phosphorylated and sumoylated MEF2A represses transcription of NUR77 promoting synaptic differentiation. Associates with chromatin to the ZNF16 promoter.

抗原: A synthetic peptide of human MEF2A

经过测试的应用: WB, ICC/IF

推荐稀释比: WB: 1/500-1/1000 IF: 1/50-1/200

种属反应性: Rabbit

克隆性: Rabbit Monoclonal

克隆编号: R04-2C8

分子量: Calculated MW: 55 kDa; Observed MW: 55 kDa

亚型: IgG

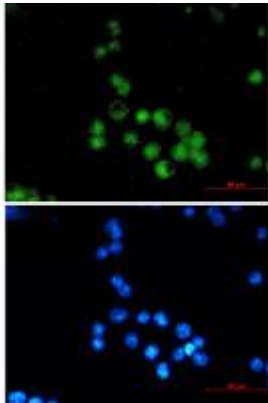
纯化: Affinity Purified

种属反应性: Human, Mouse and Rat

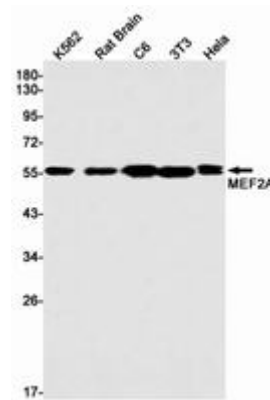
成分: PBS (without Mg²⁺ and Ca²⁺), pH 7.3 containing 50% glycerol, 0.5% BSA and 0.02% sodium azide

研究领域: Signal Transduction

储存和运输: Store at -20°C. Avoid repeated freezing and thawing



Immunocytochemistry analysis of MEF2A (green) in MCF-7 using MEF2A antibody, and DAPI (blue)



Western blot analysis of MEF2A in K562, rat Brain, C6, 3T3, HeLa lysates using MEF2A antibody.