

MED31 RABBIT PAB

货号: S219201

产品全名: MED31 兔多抗

基因符号: Sohl; CGI-125; 3110004H13Rik

UNIPROT ID: Q9Y3C7 (Gene Accession - BC012539)

背景: Component of the Mediator complex, a coactivator involved in the regulated transcription of nearly all RNA polymerase II-dependent genes. Mediator functions as a bridge to convey information from gene-specific regulatory proteins to the basal RNA polymerase II transcription machinery. Mediator is recruited to promoters by direct interactions with regulatory proteins and serves as a scaffold for the assembly of a functional preinitiation complex with RNA polymerase II and the general transcription factors.

抗原: Fusion protein of human MED31

经过测试的应用: ELISA, IHC

推荐稀释比: IHC: 100-300; ELISA: 5000-10000

种属反应性: Rabbit

克隆性: Rabbit Polyclonal

亚型: Immunogen-specific rabbit IgG

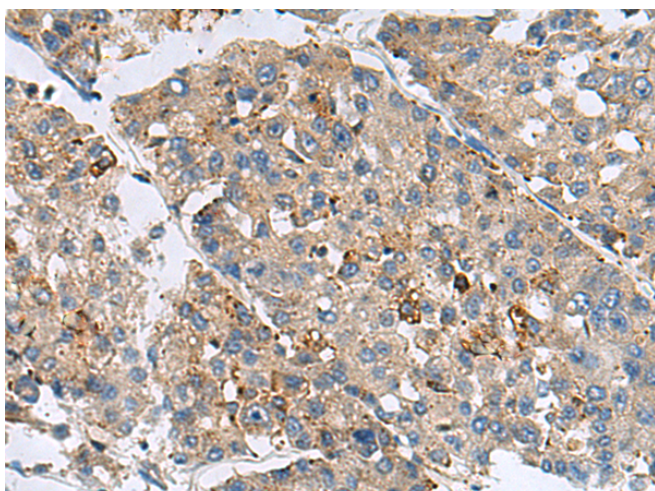
纯化: Antigen affinity purification

种属反应性: Human, Mouse

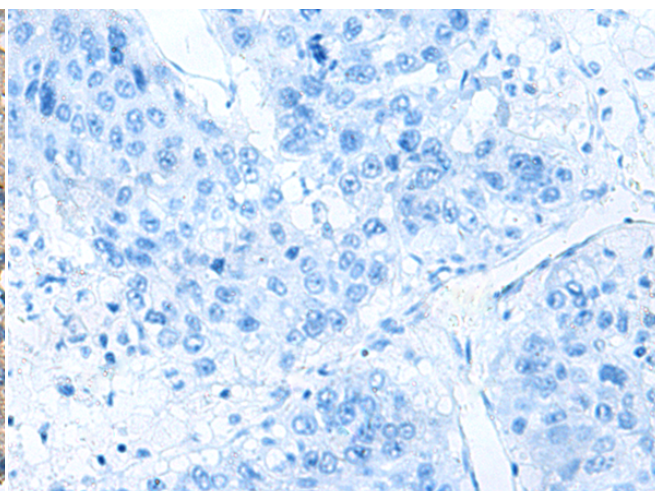
成分: PBS (without Mg²⁺ and Ca²⁺), pH 7.4, 150 mM NaCl, 0.05% Sodium Azide and 40% glycerol

研究领域: Epigenetics and Nuclear Signaling

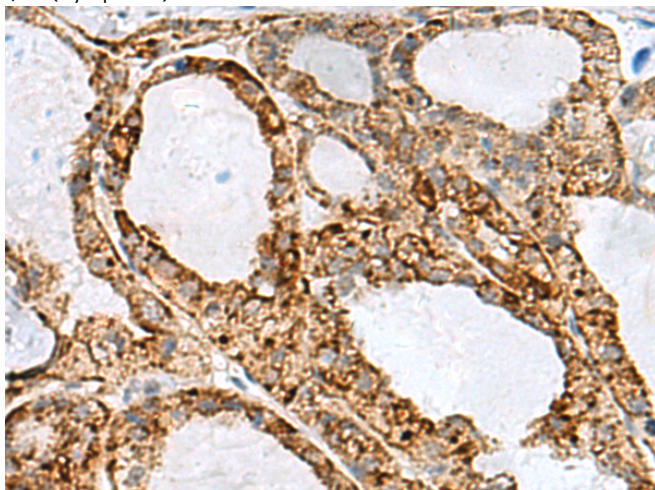
储存和运输: Store at -20°C. Avoid repeated freezing and thawing



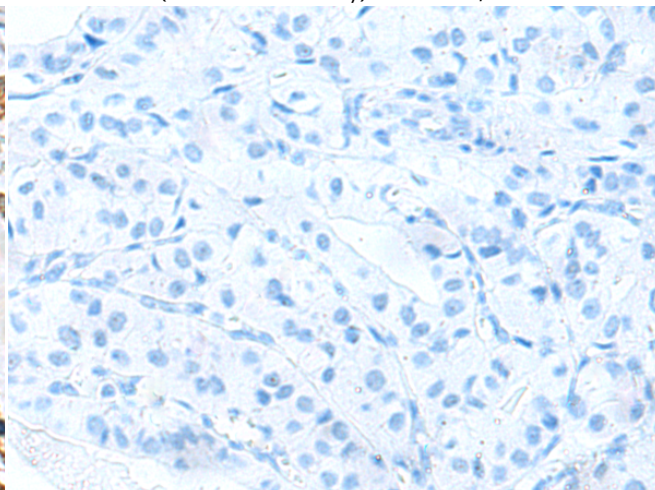
Immunohistochemistry analysis of paraffin embedded Human liver cancer tissue using 219201(MED31 Antibody) at a dilution of 1/100(Cytoplasm).



In comparison with the IHC on the left, the same paraffin-embedded Human liver cancer tissue is first treated with the fusion protein and then with 219201(Anti-MED31 Antibody) at dilution 1/100.



The image on the left is immunohistochemistry of paraffin-embedded Human thyroid cancer tissue using 219201(Anti-MED31 Antibody) at a dilution of 1/100.



In comparison with the IHC on the left, the same paraffin-embedded Human thyroid cancer tissue is first treated with fusion protein and then with D226040(Anti-MED31 Antibody) at dilution 1/100.



Product Description

Pioneering GTPase and Oncogene Product Development since 2010
