

MECOM RABBIT PAB

货号: S221985

产品全名: MECOM 兔多抗

基因符号: EVI1; MDS1; KMT8E; PRDM3; RUSAT2; MDS1-EVI1; AML1-EVI-1

UNIPROT ID: Q03112 (Gene Accession - NP_005232)

背景: The protein encoded by this gene is a transcriptional regulator and oncoprotein that may be involved in hematopoiesis, apoptosis, development, and cell differentiation and proliferation. The encoded protein can interact with CTBP1, SMAD3, CREBBP, KAT2B, MAPK8, and MAPK9. This gene can undergo translocation with the AML1 gene, resulting in overexpression of this gene and the onset of leukemia. Several transcript variants encoding a few different isoforms have been found for this gene.

抗原: Synthetic peptide of human MECOM

经过测试的应用: ELISA, IHC

推荐稀释比: IHC: 40-200; ELISA: 5000-10000

种属反应性: Rabbit

克隆性: Rabbit Polyclonal

亚型: Immunogen-specific rabbit IgG

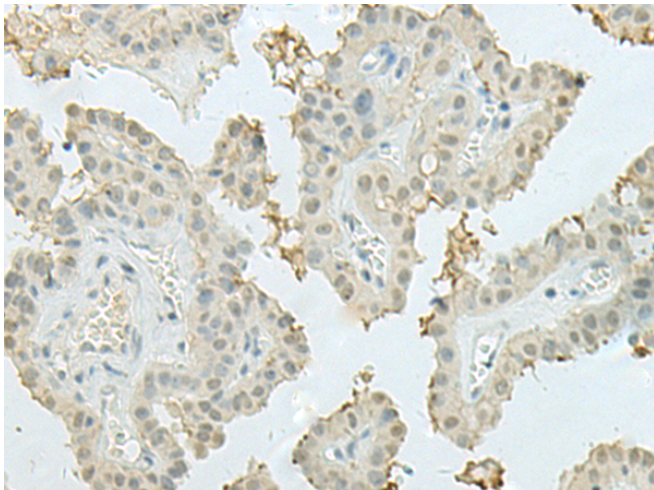
纯化: Antigen affinity purification

种属反应性: Human, Mouse

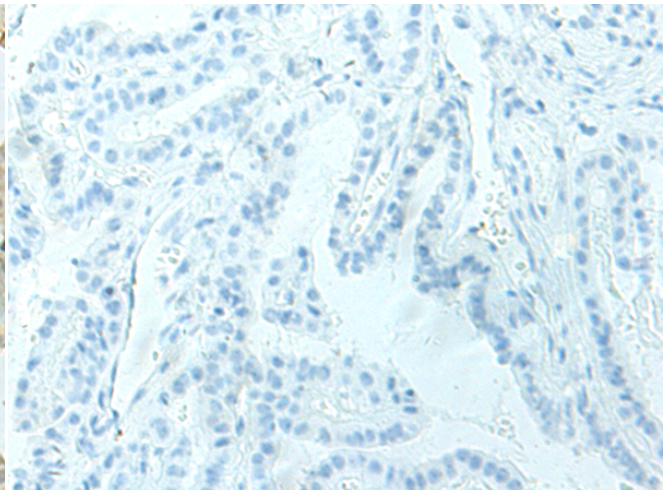
成分: PBS (without Mg²⁺ and Ca²⁺), pH 7.4, 150 mM NaCl, 0.05% Sodium Azide and 40% glycerol

研究领域: Epigenetics and Nuclear Signaling

储存和运输: Store at -20°C. Avoid repeated freezing and thawing



Immunohistochemistry analysis of paraffin embedded Human thyroid cancer tissue using 221985(MECOM Antibody) at a dilution of 1/60(Nucleus).



In comparison with the IHC on the left, the same paraffin-embedded Human thyroid cancer tissue is first treated with the synthetic peptide and then with 221985(Anti-MECOM Antibody) at dilution 1/60.