

## MECKELIN RABBIT MAB

货号: N263420

产品全名: Meckelin 兔单克隆抗体

基因符号 MKS3; JBTS6; NPH11; TNEM67; MECKELIN

**UNIPROT ID:** Q5HYA8

背景: Required for ciliary structure and function.

抗原: A synthetic peptide of human Meckelin

经过测试的应用: WB, ICC/IF

推荐稀释比: WB: 1/500-1/1000 IF: 1/50-1/200

种属反应性: Rabbit

克隆性: Rabbit Monoclonal

克隆编号: R07-2A4

分子量: Calculated MW: 112 kDa; Observed MW: 112 kDa

亚型: IgG

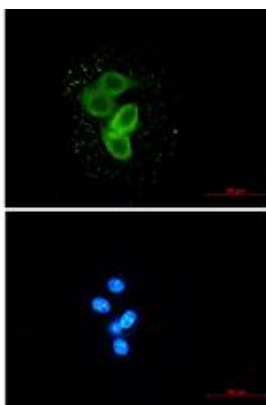
纯化: Affinity Purified

种属反应性: Human

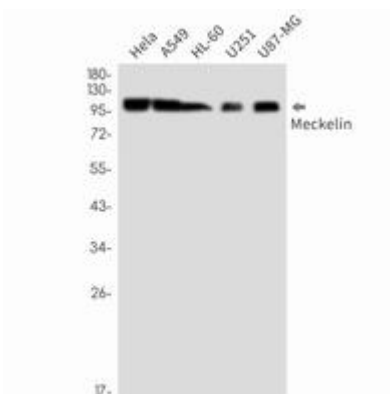
成分: PBS (without Mg<sup>2+</sup> and Ca<sup>2+</sup>), pH 7.3 containing 50% glycerol, 0.5% BSA and 0.02% sodium azide

研究领域: Tags & Cell Markers

储存和运输: Store at -20°C. Avoid repeated freezing and thawing



Immunocytochemistry analysis of Meckelin (green) in MCF-7 using Meckelin antibody, and DAPI (blue)



Western blot analysis of Meckelin in HeLa, A549, HL-60, U251, U87-MG lysates using Meckelin antibody.