

ME2 RABBIT MAB

货号: N263419

产品全名: ME2 兔单克隆抗体

基因符号 ODS1

UNIPROT ID: P23368

背景: This gene encodes a mitochondrial NAD-dependent malic enzyme, a homotetrameric protein, that catalyzes the oxidative decarboxylation of malate to pyruvate. It had previously been weakly linked to a syndrome known as Friedreich ataxia that has since been shown to be the result of mutation in a completely different gene. Certain single-nucleotide polymorphism haplotypes of this gene have been shown to increase the risk for idiopathic generalized epilepsy. Alternatively spliced transcript variants encoding different isoforms found for this gene.

抗原: A synthetic peptide of human ME2

经过测试的应用: WB, ICC/IF

推荐稀释比: WB: 1/500-1/1000 IF: 1/50-1/200

种属反应性: Rabbit

克隆性: Rabbit Monoclonal

克隆编号: R06-3F0

分子量: Calculated MW: 65 kDa; Observed MW: 65 kDa

亚型: IgG

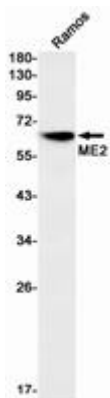
纯化: Affinity Purified

种属反应性: Human, Mouse and Rat

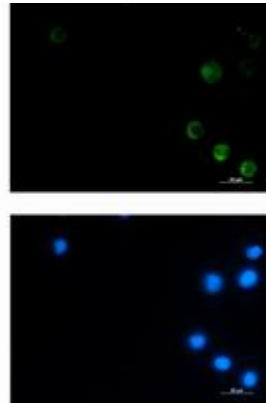
成分: PBS (without Mg²⁺ and Ca²⁺), pH 7.3 containing 50% glycerol, 0.5% BSA and 0.02% sodium azide

研究领域: Signal Transduction

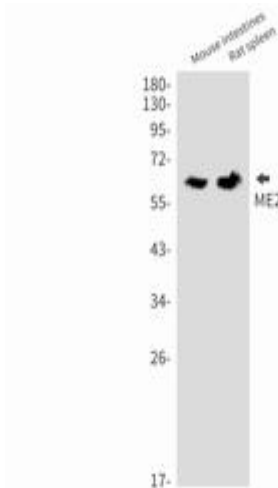
储存和运输: Store at -20°C. Avoid repeated freezing and thawing



Western blot analysis of ME2 in Ramos lysates using ME2 antibody



Immunocytochemistry analysis of ME2 (green) in Jurkat using ME2 antibody, and DAPI (blue).



Western blot analysis of ME2 in mouse intestines, rat spleen lysates using ME2 antibody.