

## MCPH1 RABBIT PAB

货号: S218373

产品全名: MCPH1 兔多抗

基因符号: MCT; BRIT1

**UNIPROT ID:** Q8NEM0 (Gene Accession - BC030702)

**背景:** This gene encodes a DNA damage response protein. The encoded protein may play a role in G2/M checkpoint arrest via maintenance of inhibitory phosphorylation of cyclin-dependent kinase 1. Mutations in this gene have been associated with primary autosomal recessive microcephaly 1 and premature chromosome condensation syndrome. Alternatively spliced transcript variants have been described.

**抗原:** Fusion protein of human MCPH1

**经过测试的应用:** ELISA, IHC

**推荐稀释比:** IHC: 50-300; ELISA: 5000-10000

**种属反应性:** Rabbit

**克隆性:** Rabbit Polyclonal

**亚型:** Immunogen-specific rabbit IgG

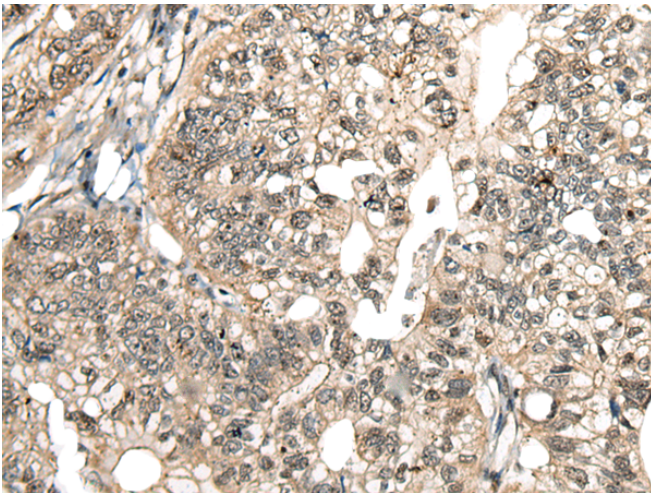
**纯化:** Antigen affinity purification

**种属反应性:** Human

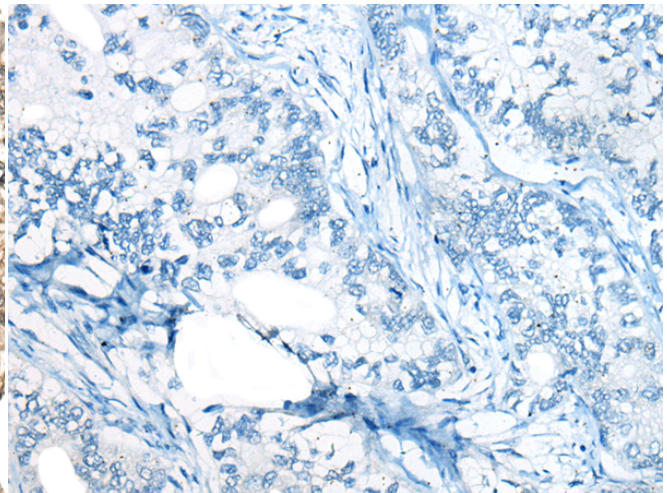
**成分:** PBS (without Mg<sup>2+</sup> and Ca<sup>2+</sup>), pH 7.4, 150 mM NaCl, 0.05% Sodium Azide and 40% glycerol

**研究领域:** Epigenetics and Nuclear Signaling

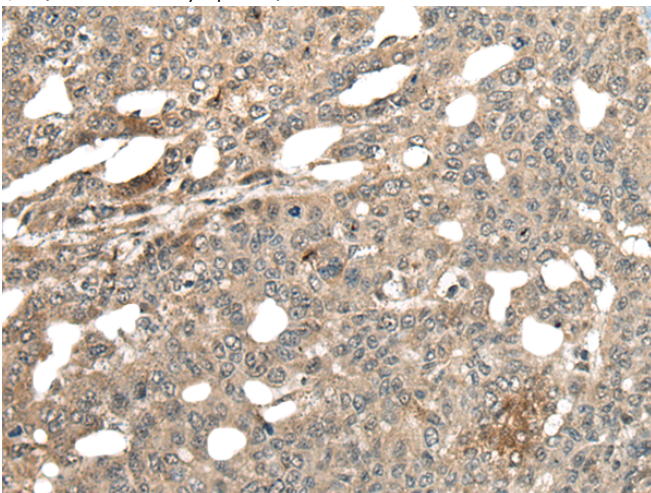
**储存和运输:** Store at -20°C. Avoid repeated freezing and thawing



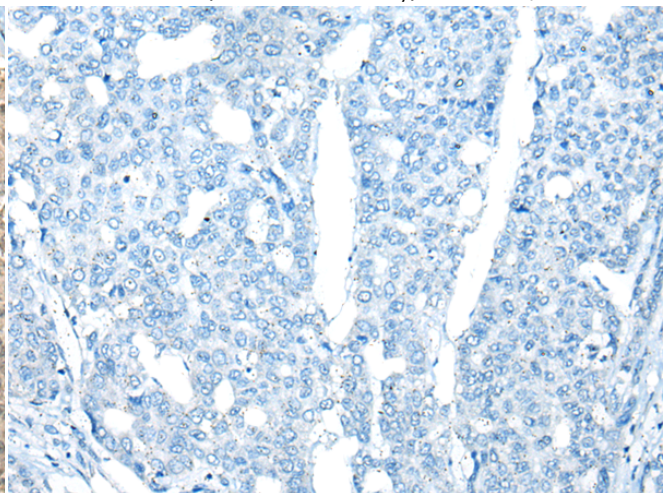
Immunohistochemistry analysis of paraffin embedded Human gastric cancer tissue using 218373(MCPH1 Antibody) at a dilution of 1/110(Nucleus and Cytoplasm).



In comparison with the IHC on the left, the same paraffin-embedded Human gastric cancer tissue is first treated with the fusion protein and then with 218373(Anti-MCPH1 Antibody) at dilution 1/110.



The image on the left is immunohistochemistry of paraffin-embedded Human liver cancer tissue using 218373(Anti-MCPH1 Antibody) at a dilution of 1/110.



In comparison with the IHC on the left, the same paraffin-embedded Human liver cancer tissue is first treated with fusion protein and then with D224277(Anti-MCPH1 Antibody) at dilution 1/110.



# Product Description

Pioneering GTPase and Oncogene Product Development since 2010

---