

MCM6 RABBIT MAB

货号: N261547

产品全名: MCM6 兔单克隆抗体

基因符号 minichromosome maintenance complex component 6; Mis5;
P105MCM; MCG40308

UNIPROT ID: Q14566

背景: Acts as component of the MCM2-7 complex (MCM complex) which is the putative replicative helicase essential for 'once per cell cycle' DNA replication initiation and elongation in eukaryotic cells.

抗原: Recombinant protein of human MCM6

经过测试的应用: WB,IHC-F,IHC-P,ICC/IF,IP

推荐稀释比: WB: 1/500-1/1000 IHC: 1/50-1/100 IF: 1/50-1/200 IP: 1/20

种属反应性: Rabbit

克隆性: Rabbit Monoclonal

克隆编号: R02-2I2

分子量: Calculated MW: 93 kDa; Observed MW: 93 kDa

亚型: IgG

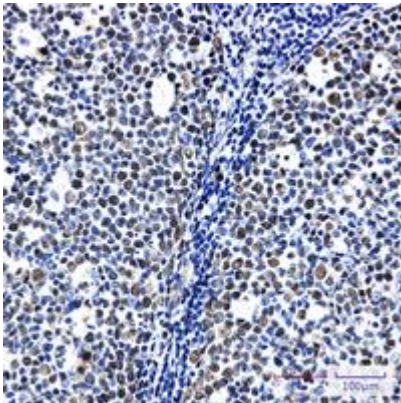
纯化: Affinity Purified

种属反应性: Human

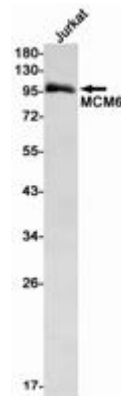
成分: PBS (without Mg²⁺ and Ca²⁺), pH 7.3 containing 50% glycerol, 0.5% BSA and 0.02% sodium azide

研究领域: Epigenetics and Nuclear Signaling

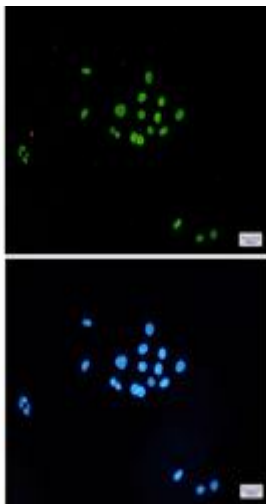
储存和运输: Store at -20°C. Avoid repeated freezing and thawing



Immunohistochemistry analysis of paraffin-embedded Human tonsil using MCM6 antibody. High-pressure and temperature Sodium Citrate pH 6.0 was used for antigen retrieval.



Western blot analysis of MCM6 in Jurkat lysates using MCM6 antibody.



Immunocytochemistry analysis of MCM6 (green) in HeLa using MCM6 antibody, and DAPI (blue)