

MCM5 RABBIT PAB

货号: N225921

产品全名: MCM5 兔多抗

基因符号 CDC46; MCM5; MGC5315; PI CDC46

UNIPROT ID: P33992

背景: MCM5 Belongs to the MCM family.

抗原: A synthesized peptide derived from human MCM5

经过测试的应用: WB,IHC-P,ICC/IF,IP,FC

推荐稀释比: WB: 1/500-1/1000 IHC: 1/50-1/100 IF: 1/50-1/200 IP: 1/20 FC:
1/50-1/100

种属反应性: Rabbit

克隆性: Rabbit Polyclonal

分子量: Calculated MW: 82 kDa; Observed MW: 82 kDa

亚型: IgG

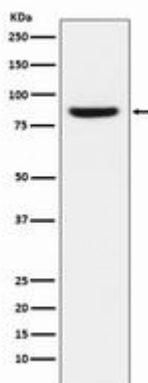
纯化: Affinity Chromatography

种属反应性: Human,Mouse

成分: PBS (without Mg²⁺ and Ca²⁺), pH 7.3 containing 50% glycerol,
0.5% BSA and 0.02% sodium azide

研究领域: Epigenetics and Nuclear Signaling

储存和运输: Store at -20°C. Avoid repeated freezing and thawing



Western blot analysis of MCM5 in MCF-7 lysates using MCM5 antibody.