

MCM4 RABBIT MAB

货号: N263418

产品全名: MCM4 兔单克隆抗体

基因符号 MCM4; CDC21; DNA replication licensing factor MCM4; CDC21 homolog; PI-CDC21

UNIPROT ID: P33991

背景: Acts as component of the MCM2-7 complex (MCM complex) which is the putative replicative helicase essential for 'once per cell cycle' DNA replication initiation and elongation in eukaryotic cells.

抗原: A synthetic peptide of human MCM4

经过测试的应用: WB,IP

推荐稀释比: WB: 1/500-1/1000 IP: 1/20

种属反应性: Rabbit

克隆性: Rabbit Monoclonal

克隆编号: R02-8F8

分子量: Calculated MW: 97 kDa; Observed MW: 97 kDa

亚型: IgG

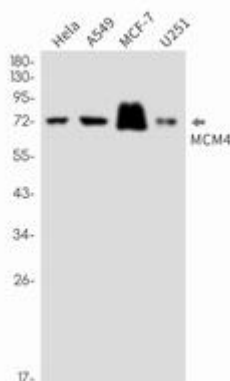
纯化: Affinity Purified

种属反应性: Human

成分: PBS (without Mg²⁺ and Ca²⁺), pH 7.3 containing 50% glycerol, 0.5% BSA and 0.02% sodium azide

研究领域: Epigenetics and Nuclear Signaling

储存和运输: Store at -20°C. Avoid repeated freezing and thawing



Western blot analysis of MCM4 in HeLa, A549, MCF-7, U251 lysates using MCM4 antibody.



Product Description

Pioneering GTPase and Oncogene Product Development since 2010
