

MCHR2 RABBIT PAB

货号: S215895

产品全名: MCHR2 兔多抗

基因符号: SLT; MCH2; MCH2R; GPR145; GPRV17; MCH-2R; MCH-R2; MCHR-2

UNIPROT ID: Q969V1 (Gene Accession - NP_115892)

背景: Receptor for melanin-concentrating hormone, coupled to G proteins that activate phosphoinositide hydrolysis.

抗原: Synthetic peptide of human MCHR2

经过测试的应用: ELISA, IHC

推荐稀释比: IHC: 20-100; ELISA: 5000-10000

种属反应性: Rabbit

克隆性: Rabbit Polyclonal

亚型: Immunogen-specific rabbit IgG

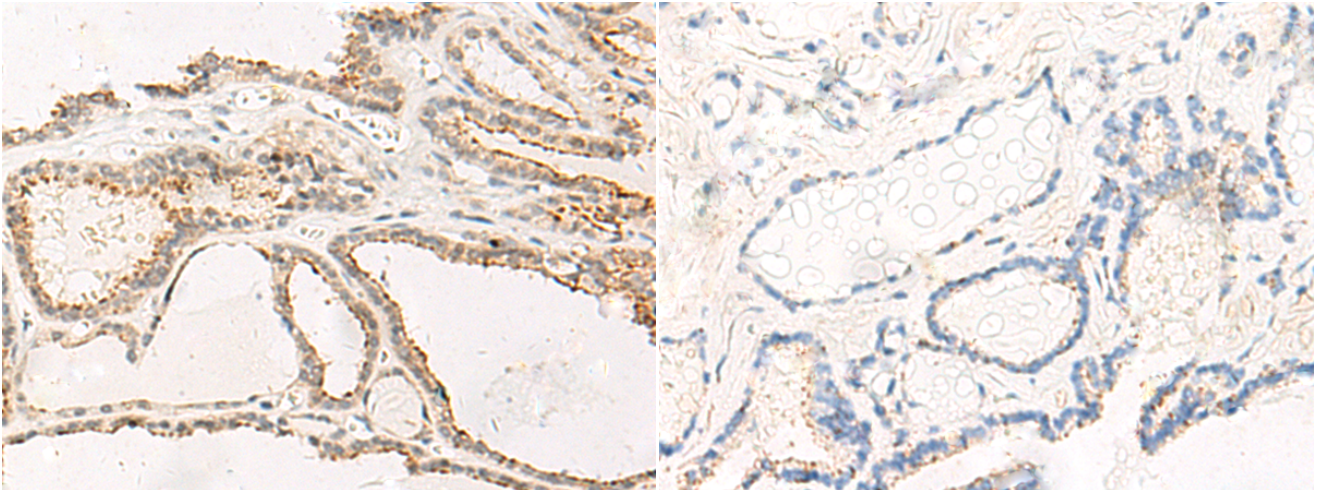
纯化: Antigen affinity purification

种属反应性: Human

成分: PBS (without Mg²⁺ and Ca²⁺), pH 7.4, 150 mM NaCl, 0.05% Sodium Azide and 40% glycerol

研究领域: Signal Transduction, Neuroscience

储存和运输: Store at -20°C. Avoid repeated freezing and thawing



Immunohistochemistry analysis of paraffin embedded Human thyroid cancer tissue using 215895(MCHR2 Antibody) at a dilution of 1/20(Cell membrane).

In comparison with the IHC on the left, the same paraffin-embedded Human thyroid cancer tissue is first treated with the synthetic peptide and then with 215895(Anti-MCHR2 Antibody) at dilution 1/20.