

MAT1A RABBIT MAB

货号: N262491

产品全名: MAT1A 兔单克隆抗体

基因符号 MAT; SAMS; MATA1; SAMSI; MAT1A

UNIPROT ID: Q00266

背景: This gene catalyzes a two-step reaction that involves the transfer of the adenosyl moiety of ATP to methionine to form S-adenosylmethionine and triphosphosphate, which is subsequently cleaved to PPI and Pi. S-adenosylmethionine is the source of methyl groups for most biological methylations. The encoded protein is found as a homotetramer (MAT I) or a homodimer (MAT III) whereas a third form, MAT II (gamma), is encoded by the MAT2A gene. Mutations in this gene are associated with methionine adenosyltransferase deficiency.

抗原: A synthetic peptide of human MAT1A

经过测试的应用: WB,IP

推荐稀释比: WB: 1/500-1/1000 IP: 1/20

种属反应性: Rabbit

克隆性: Rabbit Monoclonal

克隆编号: R09-9C8

分子量: Calculated MW: 44 kDa; Observed MW: 44 kDa

亚型: IgG

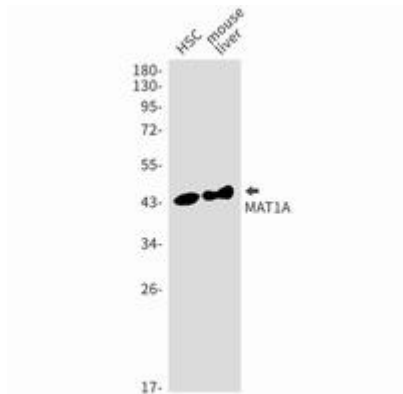
纯化: Affinity Purified

种属反应性: Human, Mouse and Rat

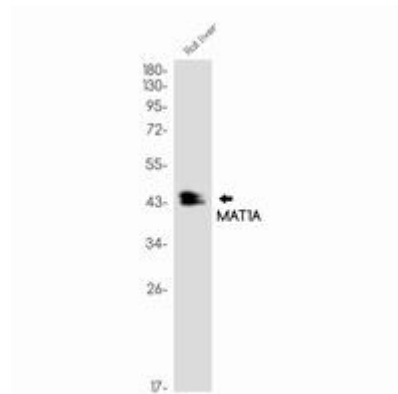
成分: PBS (without Mg²⁺ and Ca²⁺), pH 7.3 containing 50% glycerol, 0.5% BSA and 0.02% sodium azide

研究领域: Signal Transduction

储存和运输: Store at -20°C. Avoid repeated freezing and thawing



Western blot analysis of MAT1A in HSC, mouse liver lysates using MAT1A antibody.



Western blot analysis of MAT1A in rat liver lysates using MAT1A antibody.