

MAS1L RABBIT MAB

货号: N262490

产品全名: MAS1L 兔单克隆抗体

基因符号 MRG; MAS-L; dJ994E9.2

UNIPROT ID: P35410

背景: Predicted to enable G protein-coupled receptor activity. Predicted to be involved in G protein-coupled receptor signaling pathway. Located in cytosol; nucleoplasm; and plasma membrane.

抗原: A synthetic peptide of human MAS1L

经过测试的应用: WB,IP

推荐稀释比: WB: 1/500-1/1000 IP: 1/20

种属反应性: Rabbit

克隆性: Rabbit Monoclonal

克隆编号: R06-4D9

分子量: Calculated MW: 42 kDa; Observed MW: 42 kDa

亚型: IgG

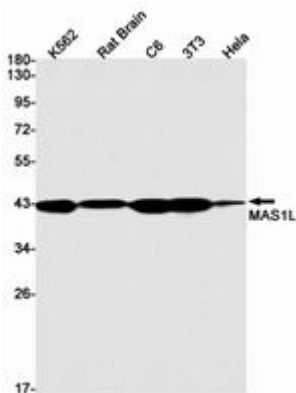
纯化: Affinity Purified

种属反应性: Human, Mouse and Rat

成分: PBS (without Mg²⁺ and Ca²⁺), pH 7.3 containing 50% glycerol, 0.5% BSA and 0.02% sodium azide

研究领域: Neuroscience

储存和运输: Store at -20°C. Avoid repeated freezing and thawing



Western blot analysis of MAS1L in K562, rat Brain, C6, 3T3, HeLa lysates using MAS1L antibody.