

MAS1 RABBIT PAB

货号: S217593

产品全名: MAS1 兔多抗

基因符号: MAS; MGRA

UNIPROT ID: P04201 (Gene Accession - BC110454)

背景: This gene encodes a class I seven-transmembrane G-protein-coupled receptor. The encoded protein is a receptor for angiotensin-(1-7) and preferentially couples to the Gq protein, activating the phospholipase C signaling pathway. The encoded protein may play a role in multiple processes including hypotension, smooth muscle relaxation and cardioprotection by mediating the effects of angiotensin-(1-7).

抗原: Fusion protein of human MAS1

经过测试的应用: ELISA, IHC

推荐稀释比: IHC: 50-200; ELISA: 2000-5000

种属反应性: Rabbit

克隆性: Rabbit Polyclonal

亚型: Immunogen-specific rabbit IgG

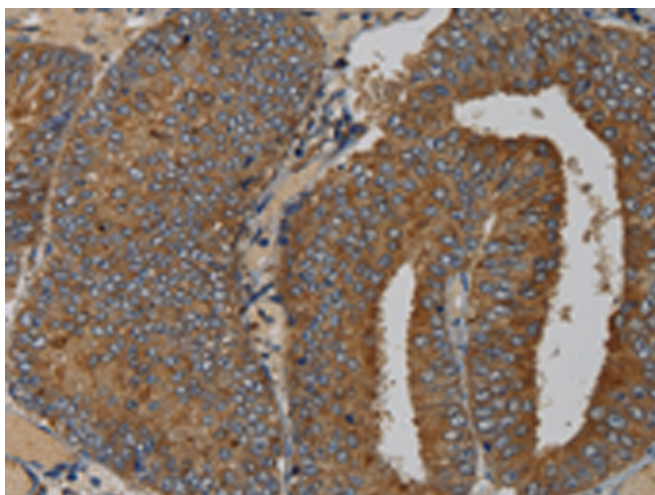
纯化: Antigen affinity purification

种属反应性: Human, Mouse, Rat

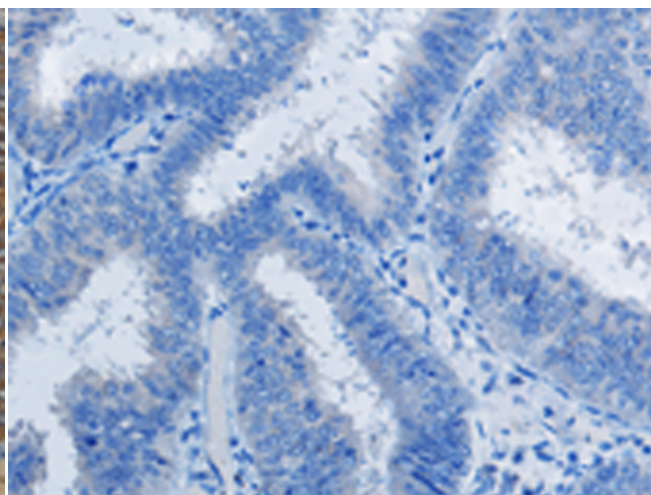
成分: PBS (without Mg²⁺ and Ca²⁺), pH 7.4, 150 mM NaCl, 0.05% Sodium Azide and 40% glycerol

研究领域: Signal Transduction, Cancer

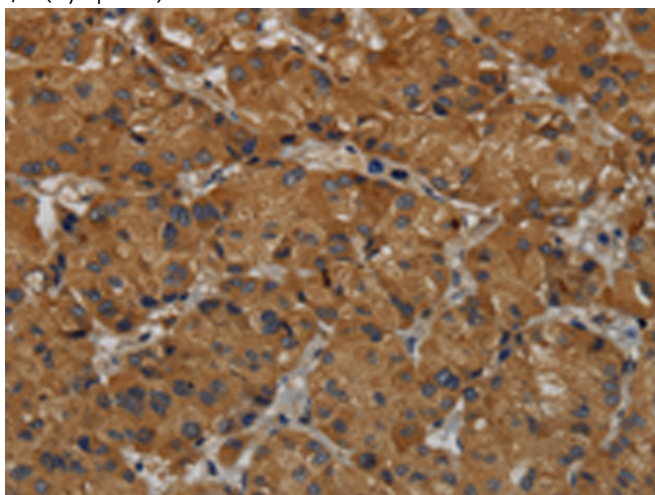
储存和运输: Store at -20°C. Avoid repeated freezing and thawing



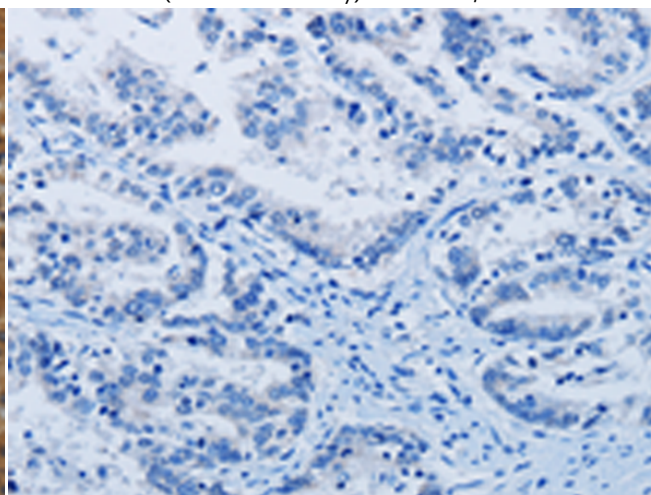
Immunohistochemistry analysis of paraffin embedded Human colon cancer tissue using 217593(MAS1 Antibody) at a dilution of 1/50(Cytoplasm).



In comparison with the IHC on the left, the same paraffin-embedded Human colon cancer tissue is first treated with the fusion protein and then with 217593(Anti-MAS1 Antibody) at dilution 1/50.



The image on the left is immunohistochemistry of paraffin-embedded Human liver cancer tissue using 217593(Anti-MAS1 Antibody) at a dilution of 1/50.



In comparison with the IHC on the left, the same paraffin-embedded Human liver cancer tissue is first treated with fusion protein and then with D222656(Anti-MAS1 Antibody) at dilution 1/50.



Product Description

Pioneering GTPase and Oncogene Product Development since 2010
