

MARVELD1 RABBIT PAB

货号: S220698

产品全名: MARVELD1 兔多抗

基因符号: GB14; MARVD1; MRVLDC1; bA548K23.8

UNIPROT ID: Q9BSK0 (Gene Accession - NP_113672)

背景: MARVELD1 (MARVEL domain containing 1), also known as GB14, MARVD1 or MRVLDC1, is a 173 amino acid protein that is widely expressed and contains one MARVEL (MAL and related proteins for vesicle trafficking and membrane link) domain. The MARVEL domain, which is common in Occludin proteins, is a 130 amino acid motif that contains four transmembrane helices, both of which have cytoplasmic N- and C-terminal regions. Localizing to the nucleus, MARVELD1 is downregulated in primary multiple tumors of liver, bladder, ovary, vulva, breast, testis, uterus, kidney and testis. The gene encoding MARVELD1 maps to human chromosome 10, which makes up approximately 4.5% of total DNA in cells and encodes nearly 1,200 genes. Defects in some of the genes that map to chromosome 10 are associated with Charcot-Marie Tooth disease, Jackson-Weiss syndrome, Usher syndrome, nonsyndromic deafness, Wolman's syndrome and Cowden syndrome.

抗原: Synthetic peptide of human MARVELD1

经过测试的应用: ELISA, WB, IHC

推荐稀释比: IHC: 50-200; WB: 200-1000; ELISA: 1000-2000

种属反应性: Rabbit

克隆性: Rabbit Polyclonal

亚型: Immunogen-specific rabbit IgG

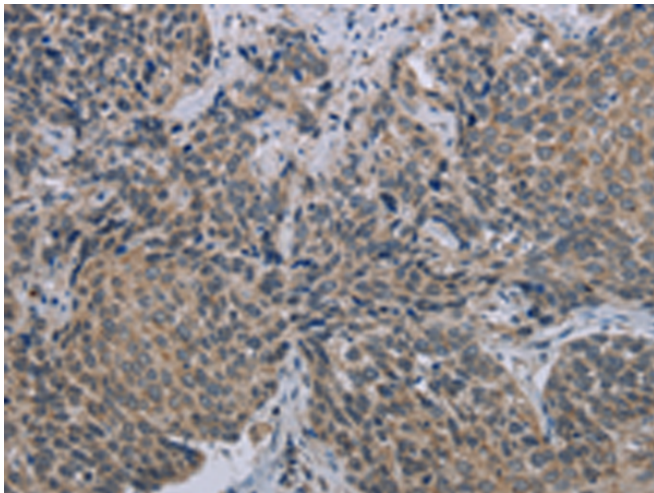
纯化: Antigen affinity purification

种属反应性: Human, Mouse

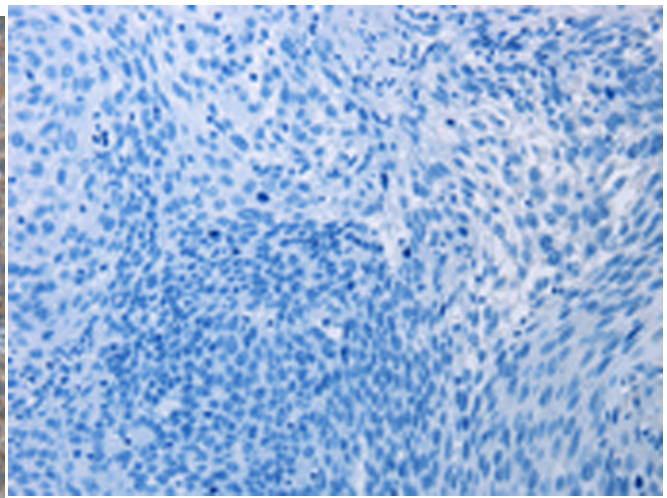
成分: PBS (without Mg²⁺ and Ca²⁺), pH 7.4, 150 mM NaCl, 0.05% Sodium Azide and 40% glycerol

研究领域: Cancer

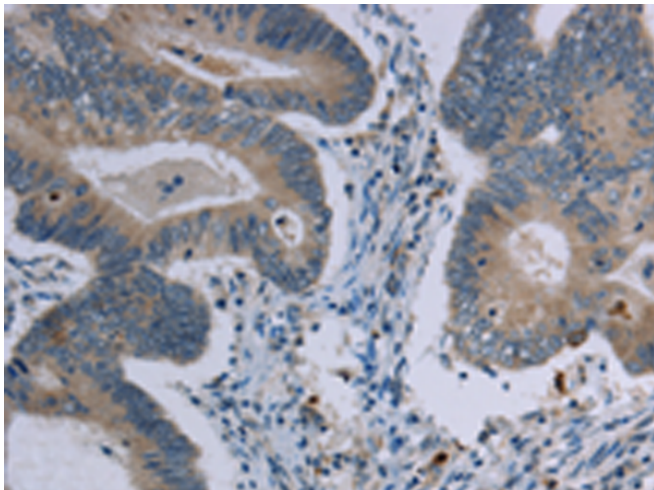
储存和运输: Store at -20°C. Avoid repeated freezing and thawing



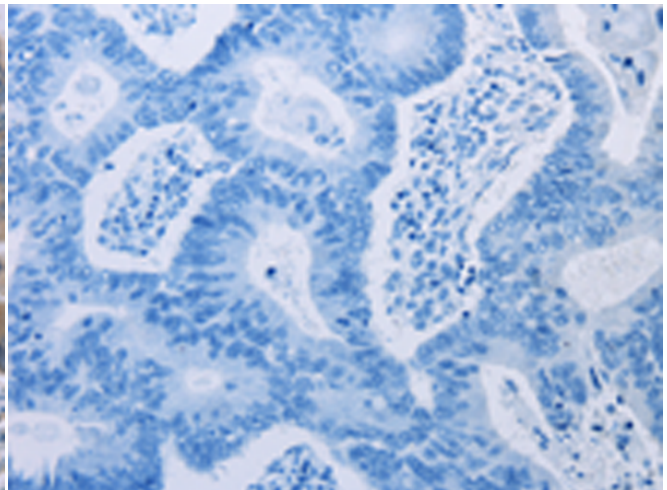
Immunohistochemistry analysis of paraffin embedded Human cervical cancer tissue using 220698(MARVELD1 Antibody) at a dilution of 1/40(Cytoplasm).



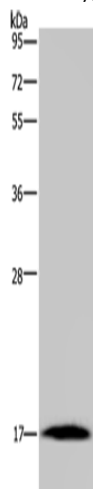
In comparison with the IHC on the left, the same paraffin-embedded Human cervical cancer tissue is first treated with the synthetic peptide and then with 220698(Anti-MARVELD1 Antibody) at dilution 1/40.



The image on the left is immunohistochemistry of paraffin-embedded Human colon cancer tissue using 220698(Anti-MARVELD1 Antibody) at a dilution of 1/40.



In comparison with the IHC on the left, the same paraffin-embedded Human colon cancer tissue is first treated with synthetic peptide and then with D261893(Anti-MARVELD1 Antibody) at dilution 1/40.



Gel: 10%SDS-PAGE, Lysate: 40 μ g;
Lane: Mouse heart tissue;
Primary antibody: 220698(MARVELD1 Antibody) at dilution 1/300;
Secondary antibody: Goat anti rabbit IgG at 1/8000 dilution;
Exposure time: 10 minutes



Product Description

Pioneering GTPase and Oncogene Product Development since 2010
