

MARK1 RABBIT PAB

货号: S210877

产品全名: MARK1 兔多抗

基因符号: MARK; Par1c; Par-1c

UNIPROT ID: Q9P0L2 (Gene Accession - BC113869)

背景: MAP/microtubule affinity-regulating kinase 1 (MARK1) is a 795 amino acid protein belonging to the CAMK Ser/Thr protein kinase family. MARK1 is thought to play a role in the stability of the microtubule matrix of the cytoskeleton. MARK1 is activated by phosphorylation of Thr215 by LKB1 in complex with STRAD and MO25. Localized to the cytoskeleton, MARK1 contains one kinase-associated (KA1) domain, one protein kinase domain and one UBA domain. Expressed as three isoforms produced by alternative splicing, MARK1 is found with highest levels in brain, skeletal muscle and heart.

抗原: Fusion protein of human MARK1

经过测试的应用: ELISA, WB, IHC

推荐稀释比: IHC: 25-100;WB: 200-1000;ELISA: 2000-5000

种属反应性: Rabbit

克隆性: Rabbit Polyclonal

亚型: Immunogen-specific rabbit IgG

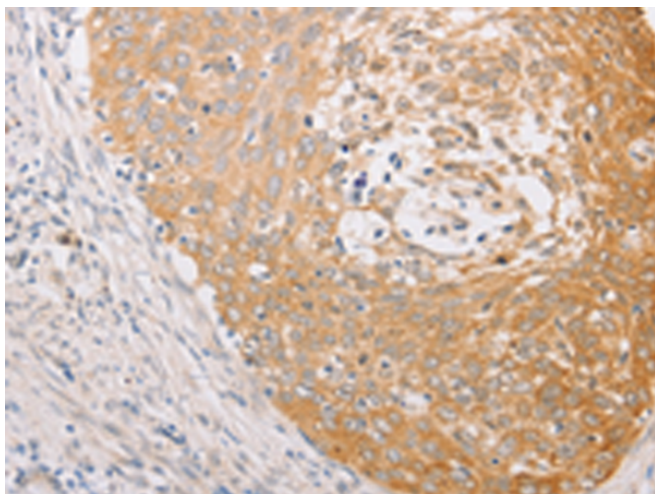
纯化: Antigen affinity purification

种属反应性: Human, Mouse, Rat

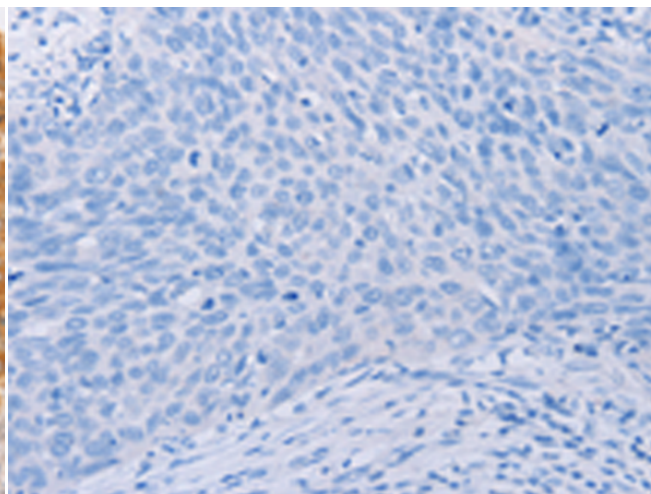
成分: PBS (without Mg²⁺ and Ca²⁺), pH 7.4, 150 mM NaCl, 0.05% Sodium Azide and 40% glycerol

研究领域: Signal Transduction

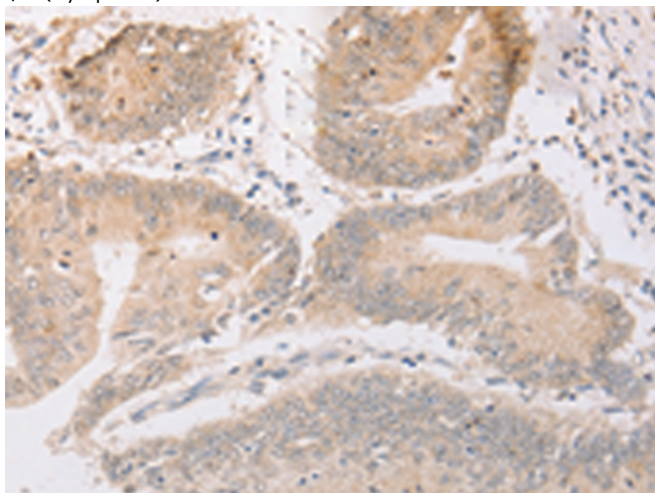
储存和运输: Store at -20°C. Avoid repeated freezing and thawing



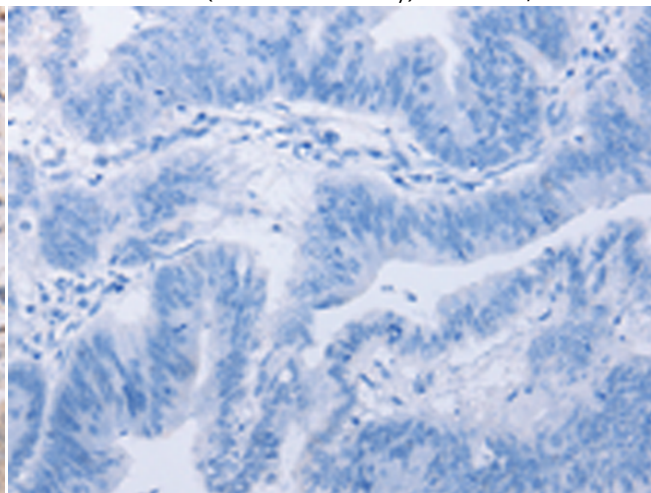
Immunohistochemistry analysis of paraffin embedded Human cervical cancer tissue using 210877(MARK1 Antibody) at a dilution of 1/30(Cytoplasm).



In comparison with the IHC on the left, the same paraffin-embedded Human cervical cancer tissue is first treated with the fusion protein and then with 210877(Anti-MARK1 Antibody) at dilution 1/30.



The image on the left is immunohistochemistry of paraffin-embedded Human colon cancer tissue using 210877(Anti-MARK1 Antibody) at a dilution of 1/30.



In comparison with the IHC on the left, the same paraffin-embedded Human colon cancer tissue is first treated with fusion protein and then with D121802(Anti-MARK1 Antibody) at dilution 1/30.



Gel: 6%SDS-PAGE, Lysate: 40 µg;
Lane: Mouse brain tissue;
Primary antibody: 210877(MARK1 Antibody) at dilution 1/300;
Secondary antibody: Goat anti rabbit IgG at 1/8000 dilution;
Exposure time: 30 seconds



Product Description

Pioneering GTPase and Oncogene Product Development since 2010
