

MAPT RABBIT PAB

货号: S216821

产品全名: MAPT 兔多抗

基因符号 TAU; MSTD; PPND; DDPAC; MAPTL; MTBT1; MTBT2; tau-40; FTDP-17; PPP1R103

UNIPROT ID: P10636 (Gene Accession - BC114948)

背景: This gene encodes the microtubule-associated protein tau (MAPT) whose transcript undergoes complex regulated alternative splicing, giving rise to several mRNA species. MAPT transcripts are differentially expressed in the nervous system, depending on stage of neuronal maturation and neuron type. MAPT gene mutations have been associated with several neurodegenerative disorders such as Alzheimer's disease, Pick's disease, frontotemporal dementia, cortico-basal degeneration and progressive supranuclear palsy.

抗原: Fusion protein of human MAPT

经过测试的应用: ELISA, WB, IHC

推荐稀释比: IHC: 50-200; WB: 1000-5000; ELISA: 5000-10000

种属反应性: Rabbit

克隆性: Rabbit Polyclonal

亚型: Immunogen-specific rabbit IgG

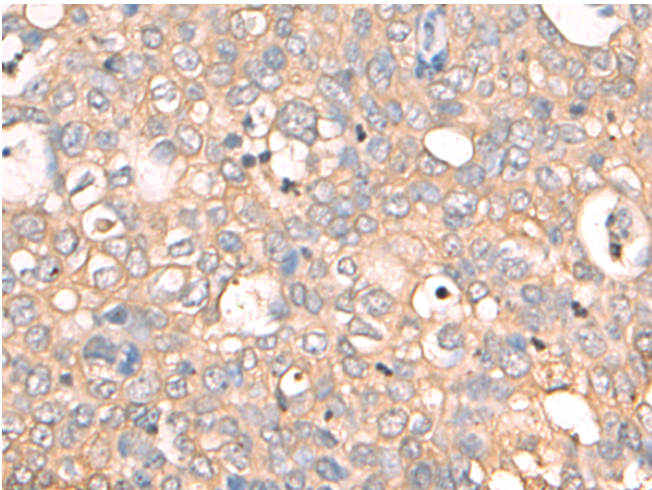
纯化: Antigen affinity purification

种属反应性: Human, Mouse, Rat

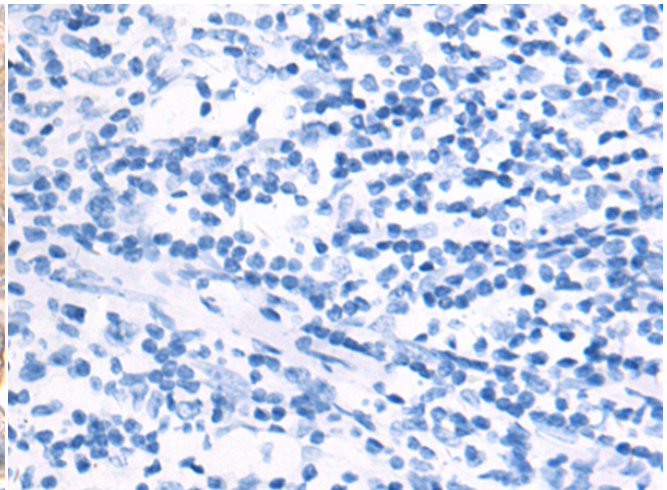
成分: PBS (without Mg²⁺ and Ca²⁺), pH 7.4, 150 mM NaCl, 0.05% Sodium Azide and 40% glycerol

研究领域: Signal Transduction, Neuroscience

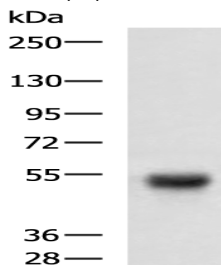
储存和运输: Store at -20°C. Avoid repeated freezing and thawing



Immunohistochemistry analysis of paraffin embedded Human cervical cancer tissue using 216821(MAPT Antibody) at a dilution of 1/75(Cytoplasm and Cell membrane).



In comparison with the IHC on the left, the same paraffin-embedded Human cervical cancer tissue is first treated with the fusion protein and then with 216821(Anti-MAPT Antibody) at dilution 1/75.



Gel: 6%SDS-PAGE, Lysate: 40 µg;

Lane: Mouse fetal brain tissue lysate;

Primary antibody: 216821(MAPT Antibody) at dilution 1/1000;

Secondary antibody: HRP-conjugated Goat anti rabbit IgG at 1/5000 dilution;

Exposure time: 5 seconds