

MAPKAPK2 RABBIT PAB

货号: S220695

产品全名: MAPKAPK2 兔多抗

基因符号: MK2; MK-2; MAPKAP-K2

UNIPROT ID: P49137 (Gene Accession - NP_116584)

背景: This gene encodes a member of the Ser/Thr protein kinase family. This kinase is regulated through direct phosphorylation by p38 MAP kinase. In conjunction with p38 MAP kinase, this kinase is known to be involved in many cellular processes including stress and inflammatory responses, nuclear export, gene expression regulation and cell proliferation. Heat shock protein HSP27 was shown to be one of the substrates of this kinase in vivo. Two transcript variants encoding two different isoforms have been found for this gene.

抗原: Synthetic peptide of human MAPKAPK2

经过测试的应用: ELISA, WB, IHC

推荐稀释比: IHC: 25-100;WB: 200-1000;ELISA: 1000-2000

种属反应性: Rabbit

克隆性: Rabbit Polyclonal

亚型: Immunogen-specific rabbit IgG

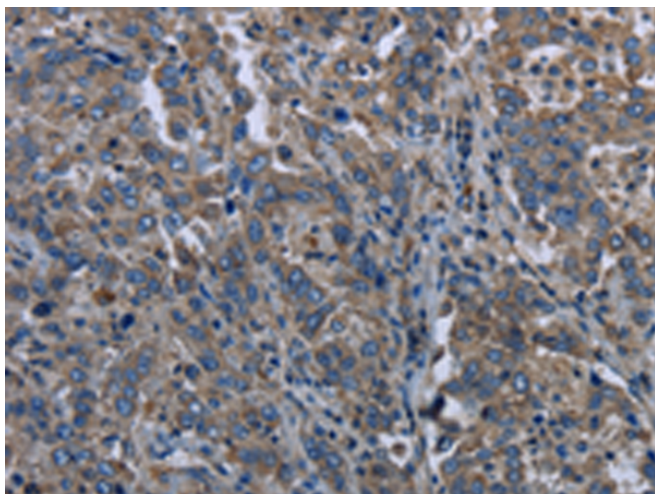
纯化: Antigen affinity purification

种属反应性: Human, Mouse

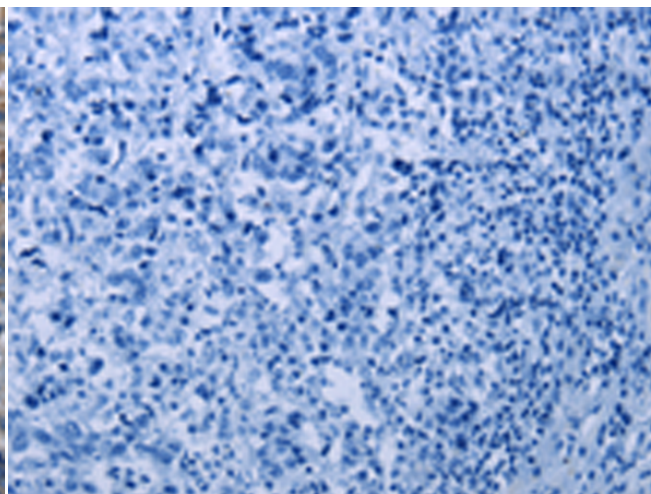
成分: PBS (without Mg²⁺ and Ca²⁺), pH 7.4, 150 mM NaCl, 0.05% Sodium Azide and 40% glycerol

研究领域: Signal Transduction

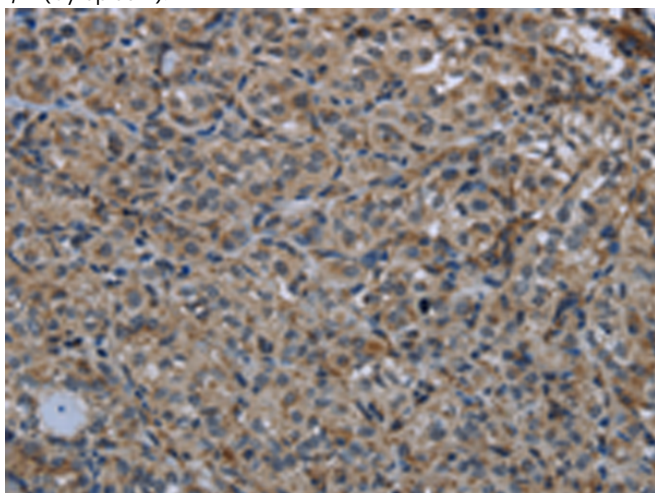
储存和运输: Store at -20°C. Avoid repeated freezing and thawing



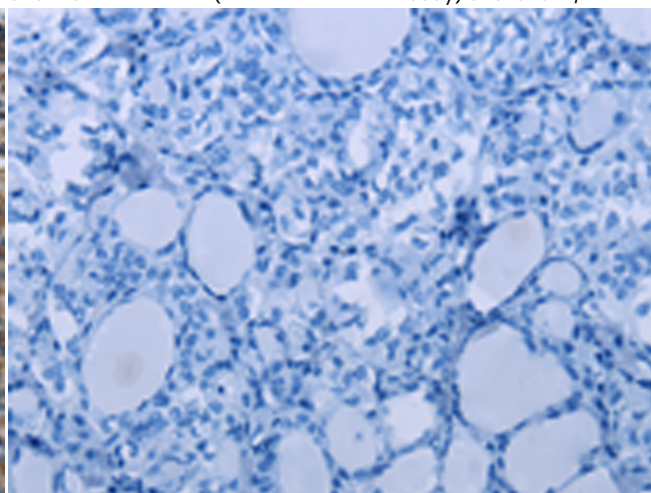
Immunohistochemistry analysis of paraffin embedded Human liver cancer tissue using 220695(MAPKAPK2 Antibody) at a dilution of 1/20(Cytoplasm).



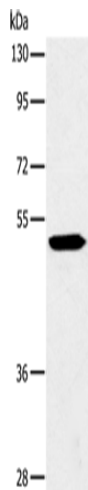
In comparison with the IHC on the left, the same paraffin-embedded Human liver cancer tissue is first treated with the synthetic peptide and then with 220695(Anti-MAPKAPK2 Antibody) at dilution 1/20.



The image on the left is immunohistochemistry of paraffin-embedded Human thyroid cancer tissue using 220695(Anti-MAPKAPK2 Antibody) at a dilution of 1/20.



In comparison with the IHC on the left, the same paraffin-embedded Human thyroid cancer tissue is first treated with synthetic peptide and then with D261888(Anti-MAPKAPK2 Antibody) at dilution 1/20.



Gel: 8%SDS-PAGE, Lysate: 40 µg;
Lane: A549 cells;
Primary antibody: 220695(MAPKAPK2 Antibody) at dilution 1/300;
Secondary antibody: Goat anti rabbit IgG at 1/8000 dilution;
Exposure time: 3 minutes



Product Description

Pioneering GTPase and Oncogene Product Development since 2010
