

MAPK8IP3 RABBIT PAB

货号: S216030

产品全名: MAPK8IP3 兔多抗

基因符号: *syd*; *JIP3*; *SYD2*; *JIP-3*; *JSAP1*

UNIPROT ID: Q9UPT6 (Gene Accession - NP_055948)

背景: The protein encoded by this gene shares similarity with the product of *Drosophila* *syd* gene, required for the functional interaction of kinesin I with axonal cargo. Studies of the similar gene in mouse suggested that this protein may interact with, and regulate the activity of numerous protein kinases of the JNK signaling pathway, and thus function as a scaffold protein in neuronal cells. The *C. elegans* counterpart of this gene is found to regulate synaptic vesicle transport possibly by integrating JNK signaling and kinesin-1 transport. Several alternatively spliced transcript variants of this gene have been described, but the full-length nature of some of these variants has not been determined.

抗原: Synthetic peptide of human MAPK8IP3

经过测试的应用: ELISA, IHC

推荐稀释比: IHC: 40-200; ELISA: 5000-10000

种属反应性: Rabbit

克隆性: Rabbit Polyclonal

亚型: Immunogen-specific rabbit IgG

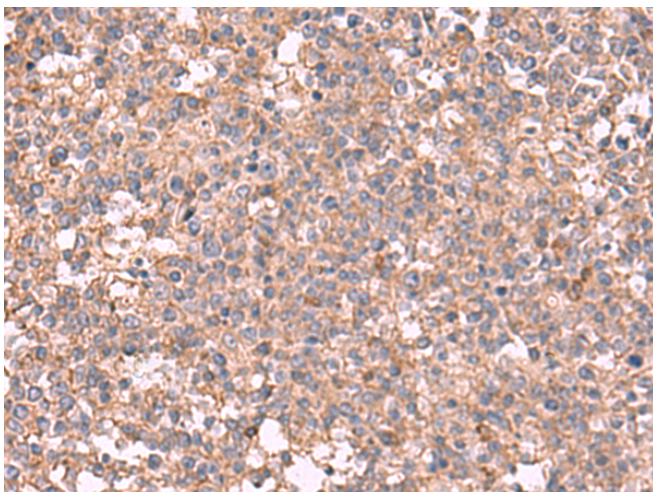
纯化: Antigen affinity purification

种属反应性: Human

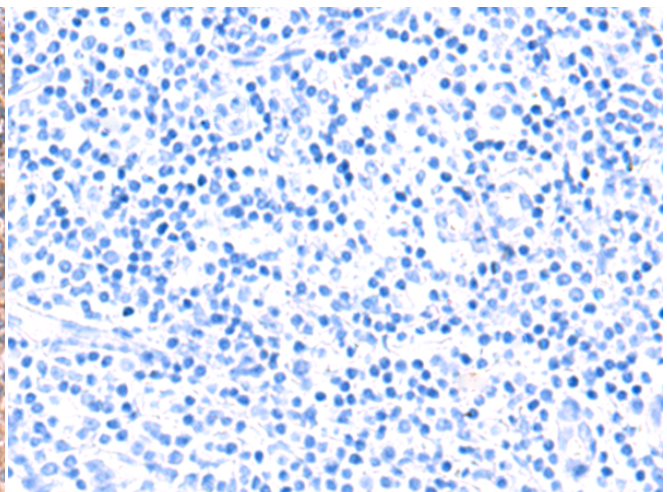
成分: PBS (without Mg²⁺ and Ca²⁺), pH 7.4, 150 mM NaCl, 0.05% Sodium Azide and 40% glycerol

研究领域: Signal Transduction

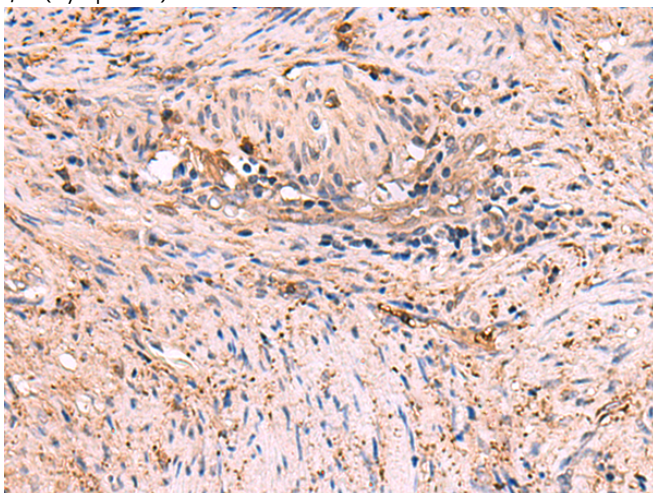
储存和运输: Store at -20°C. Avoid repeated freezing and thawing



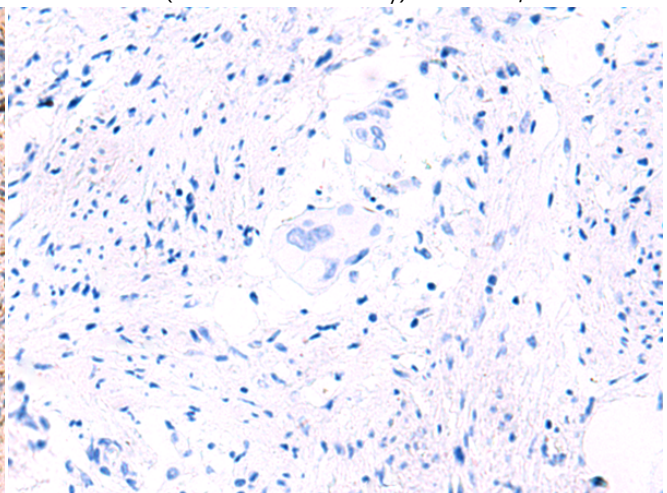
Immunohistochemistry analysis of paraffin embedded Human tonsil tissue using 216030 (MAPK8IP3 Antibody) at a dilution of 1/45 (Cytoplasm).



In comparison with the IHC on the left, the same paraffin-embedded Human tonsil tissue is first treated with the synthetic peptide and then with 216030 (Anti-MAPK8IP3 Antibody) at dilution 1/45.



The image on the left is immunohistochemistry of paraffin-embedded Human cervical cancer tissue using 216030 (Anti-MAPK8IP3 Antibody) at a dilution of 1/45.



In comparison with the IHC on the left, the same paraffin-embedded Human cervical cancer tissue is first treated with synthetic peptide and then with D164293 (Anti-MAPK8IP3 Antibody) at dilution 1/45.



Product Description

Pioneering GTPase and Oncogene Product Development since 2010
