

## MAPK4 RABBIT PAB

货号: S219768

产品全名: MAPK4 兔多抗

基因符号 ERK4; ERK-4; PRKM4; p63MAPK; p63-MAPK

**UNIPROT ID:** P31152 (Gene Accession - NP\_002738 )

背景: Mitogen-activated protein kinase 4 is a member of the mitogen-activated protein kinase family. Tyrosine kinase growth factor receptors activate mitogen-activated protein kinases which then translocate into the nucleus and phosphorylate nuclear targets. Alternative splicing results in multiple transcript variants.

抗原: Synthetic peptide of human MAPK4

经过测试的应用: ELISA, WB, IHC

推荐稀释比: IHC: 30-150;WB: 500-2000;ELISA: 5000-10000

种属反应性: Rabbit

克隆性: Rabbit Polyclonal

亚型: Immunogen-specific rabbit IgG

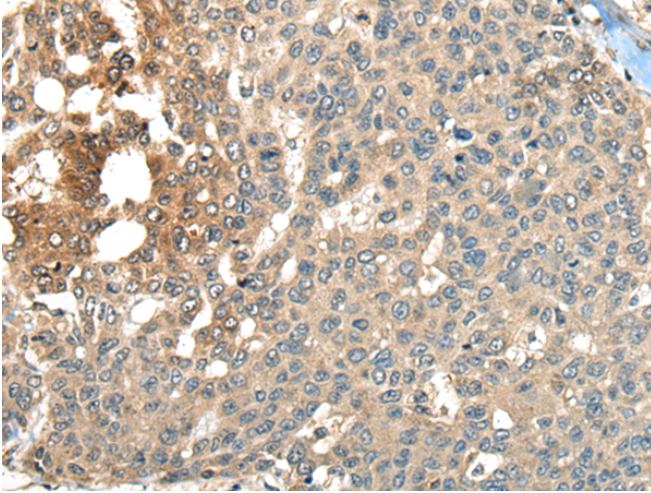
纯化: Antigen affinity purification

种属反应性: Human, Mouse

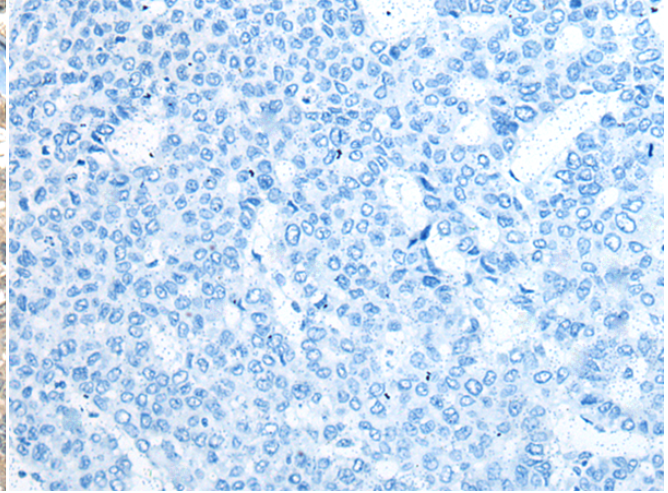
成分: PBS (without Mg<sup>2+</sup> and Ca<sup>2+</sup>), pH 7.4, 150 mM NaCl, 0.05% Sodium Azide and 40% glycerol

研究领域: Signal Transduction

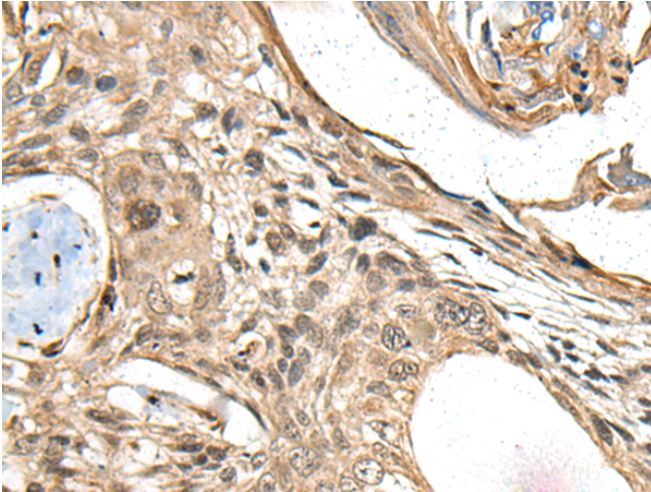
储存和运输: Store at -20°C. Avoid repeated freezing and thawing



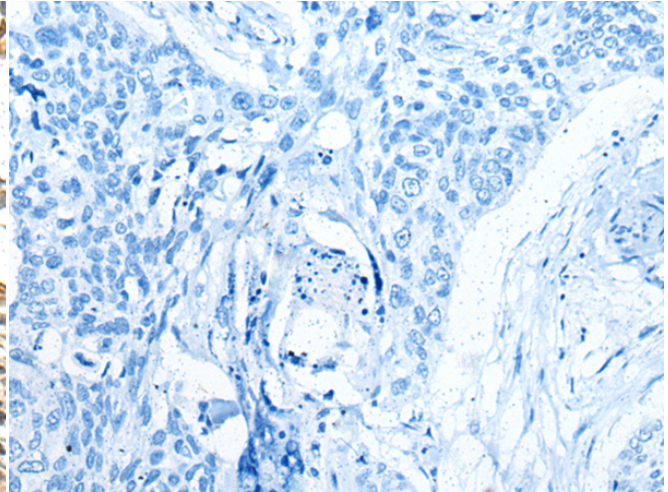
Immunohistochemistry analysis of paraffin embedded Human liver cancer tissue using 219768(MAPK4 Antibody) at a dilution of 1/35(Cytoplasm or Nucleus).



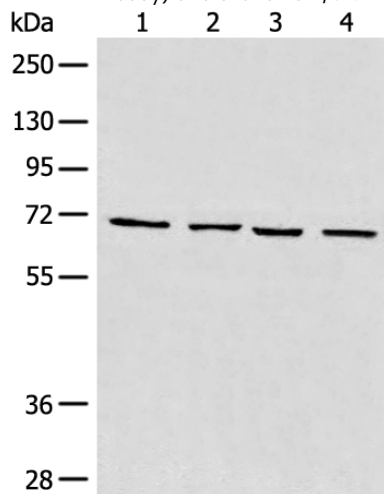
In comparison with the IHC on the left, the same paraffin-embedded Human liver cancer tissue is first treated with the synthetic peptide and then with 219768(Anti-MAPK4 Antibody) at dilution 1/35.



The image on the left is immunohistochemistry of paraffin-embedded Human esophagus cancer tissue using 219768(Anti-MAPK4 Antibody) at a dilution of 1/35.



In comparison with the IHC on the left, the same paraffin-embedded Human esophagus cancer tissue is first treated with synthetic peptide and then with D260319(Anti-MAPK4 Antibody) at dilution 1/35.



Gel: 8%SDS-PAGE, Lysate: 40 µg;  
Lane 1-4: 293T cell, Human heart tissue, Raji and LNCAP cell lysates;  
Primary antibody: 219768(MAPK4 Antibody) at dilution 1/550;  
Secondary antibody: Goat anti rabbit IgG at 1/8000 dilution;  
Exposure time: 30 seconds



# Product Description

Pioneering GTPase and Oncogene Product Development since 2010

---