

MAP4K3 RABBIT PAB

货号: S216827

产品全名: MAP4K3 兔多抗

基因符号: GLK; MEKKK3; MEKKK 3; MAPKKK3; RAB8IPL1

UNIPROT ID: Q8IVH8 (Gene Accession - BC071579)

背景: This gene encodes a member of the mitogen-activated protein kinase kinase kinase family. The encoded protein activates key effectors in cell signalling, among them c-Jun. Alternatively spliced transcripts encoding multiple isoforms have been observed for this gene. May play a role in the response to environmental stress. Appears to act upstream of the JUN N-terminal pathway. Ubiquitously expressed in all tissues examined, with high levels in heart, brain, placenta, skeletal muscle, kidney and pancreas and lower levels in lung and liver.

抗原: Fusion protein of human MAP4K3

经过测试的应用: ELISA, WB, IHC

推荐稀释比: IHC: 25-100;WB: 500-2000;ELISA: 2000-5000

种属反应性: Rabbit

克隆性: Rabbit Polyclonal

亚型: Immunogen-specific rabbit IgG

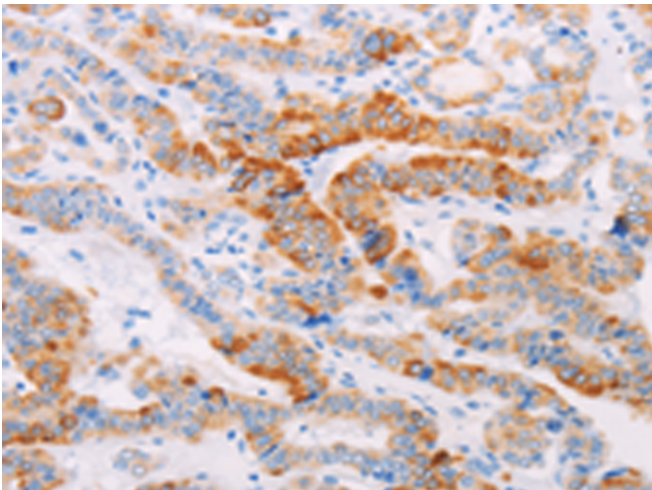
纯化: Antigen affinity purification

种属反应性: Human, Mouse, Rat

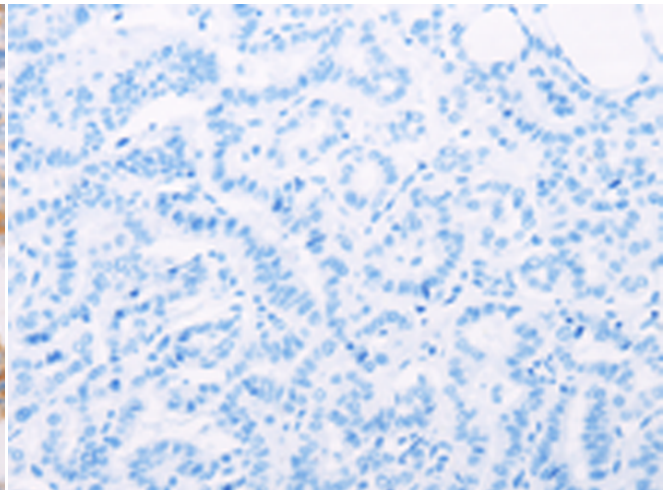
成分: PBS (without Mg²⁺ and Ca²⁺), pH 7.4, 150 mM NaCl, 0.05% Sodium Azide and 40% glycerol

研究领域: Signal Transduction

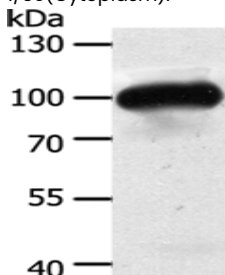
储存和运输: Store at -20°C. Avoid repeated freezing and thawing



Immunohistochemistry analysis of paraffin embedded Human thyroid cancer tissue using 216827(MAP4K3 Antibody) at a dilution of 1/30(Cytoplasm).



In comparison with the IHC on the left, the same paraffin-embedded Human thyroid cancer tissue is first treated with the fusion protein and then with 216827(Anti-MAP4K3 Antibody) at dilution 1/30.



Gel: 10%SDS-PAGE, Lysate: 50 µg;

Lane: Mouse heart tissue;

Primary antibody: 216827(MAP4K3 Antibody) at dilution 1/400;

Secondary antibody: Goat anti rabbit IgG at 1/8000 dilution;

Exposure time: 10 seconds