

## MAP4K2/3 RABBIT PAB

货号: N225234

产品全名: MAP4K2/3 兔多抗

基因符号 Mitogen-activated protein kinase kinase kinase 2; B lymphocyte serine/threonine-protein kinase; Germinal center kinase; GC kinase; MAPK/ERK kinase kinase 2; MEK kinase kinase 2; MEKKK 2; Rab8-interacting protein; Mitogen-activated protein kinase kinase kinase 3; Germinal center kinase-related protein kinase; GLK; MAPK/ERK kinase kinase kinase 3; MEK kinase kinase 3; MEKKK 3

**UNIPROT ID:** Q12851/Q8IVH8

背景: Serine/threonine-protein kinase which acts as an essential component of the MAP kinase signal transduction pathway. Acts as a MAPK kinase kinase (MAP4K) and is an upstream activator of the stress-activated protein kinase/c-Jun N-terminal kinase (SAP/JNK) signaling pathway and to a lesser extent of the p38 MAPKs signaling pathway.

抗原: Synthesized peptide derived from human GCK/GLK. at AA range: 221-270

经过测试的应用: WB,ELISA

推荐稀释比: WB: 1/500-1/1000 ELISA: 1/10000

种属反应性: Rabbit

克隆性: Rabbit Polyclonal

分子量: Calculated MW: 92 kDa; Observed MW: 100 kDa

亚型: IgG

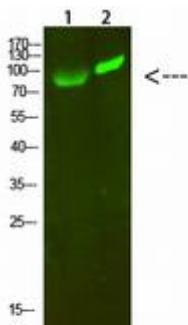
纯化: Affinity Purified

种属反应性: Human,Rat

成分: PBS (without Mg<sup>2+</sup> and Ca<sup>2+</sup>), pH 7.3 containing 50% glycerol, 0.5% BSA and 0.02% sodium azide

研究领域: Signal Transduction

储存和运输: Store at -20°C. Avoid repeated freezing and thawing



Western blot analysis of MAP4K2/3 in 293T, HeLa lysates using MAP4K2/3 antibody.