

MAP4K1 RABBIT PAB

货号: S220006

产品全名: MAP4K1 兔多抗

基因符号: HPK1

UNIPROT ID: Q92918 (Gene Accession - NP_009112.1)

背景: This gene belongs to the protein kinase superfamily, STE Ser/Thr protein kinase family, STE20 subfamily. It plays a role in the response to environmental stress and hematopoietic lineage decisions and growth regulation. Appears to act upstream of the JUN N-terminal pathway.

抗原: Synthetic peptide of human MAP4K1

经过测试的应用: ELISA, IHC

推荐稀释比: IHC: 25-100; ELISA: 1000-5000

种属反应性: Rabbit

克隆性: Rabbit Polyclonal

亚型: Immunogen-specific rabbit IgG

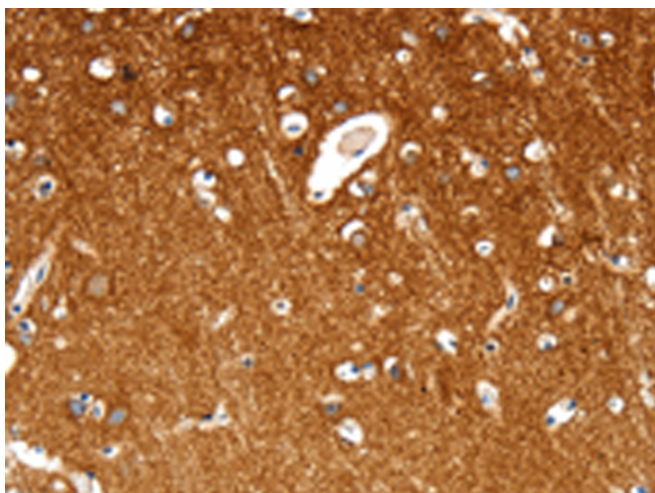
纯化: Antigen affinity purification

种属反应性: Human

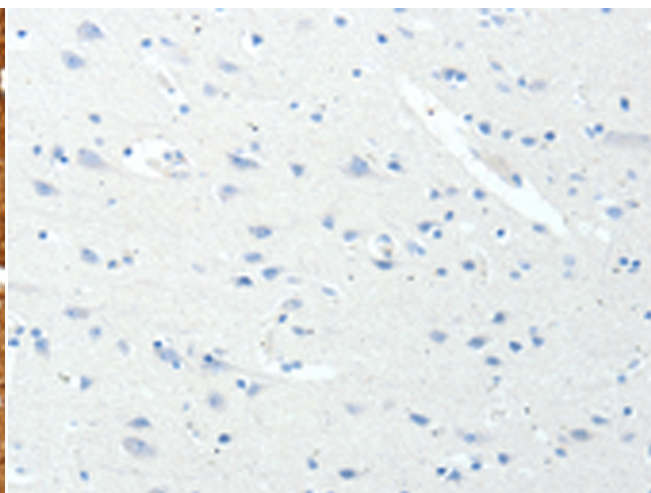
成分: PBS (without Mg²⁺ and Ca²⁺), pH 7.4, 150 mM NaCl, 0.05% Sodium Azide and 40% glycerol

研究领域: Signal Transduction

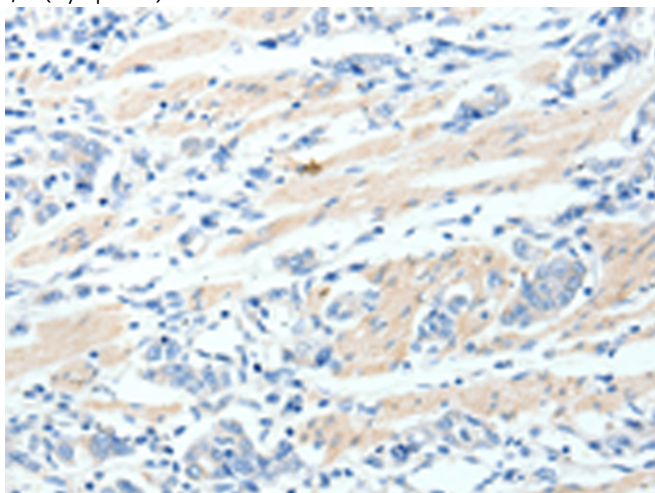
储存和运输: Store at -20°C. Avoid repeated freezing and thawing



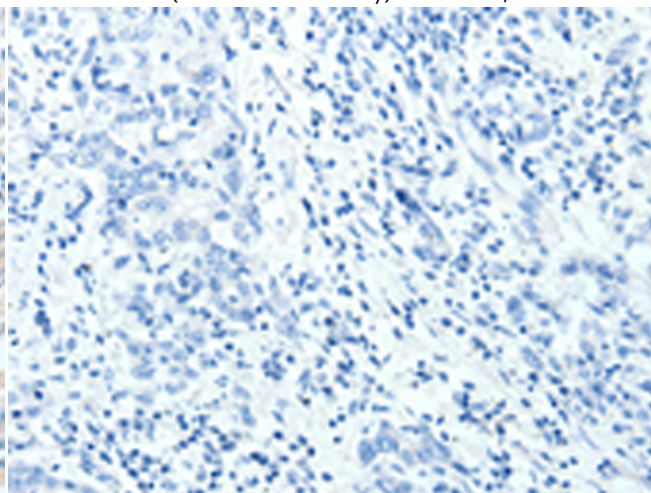
Immunohistochemistry analysis of paraffin embedded Human brain tissue using 220006(MAP4K1 Antibody) at a dilution of 1/30(Cytoplasm).



In comparison with the IHC on the left, the same paraffin-embedded Human brain tissue is first treated with the synthetic peptide and then with 220006(Anti-MAP4K1 Antibody) at dilution 1/30.



The image on the left is immunohistochemistry of paraffin-embedded Human gastric cancer tissue using 220006(Anti-MAP4K1 Antibody) at a dilution of 1/30.



In comparison with the IHC on the left, the same paraffin-embedded Human gastric cancer tissue is first treated with synthetic peptide and then with D260765(Anti-MAP4K1 Antibody) at dilution 1/30.



Product Description

Pioneering GTPase and Oncogene Product Development since 2010
