

## MAP3K7 RABBIT PAB

货号: S217879

产品全名: MAP3K7 兔多抗

基因符号: CSCF; FMD2; TAK1; MEKK7; TGF1a

**UNIPROT ID:** O43318 (Gene Accession - BC017715)

**背景:** The protein encoded by this gene is a member of the serine/threonine protein kinase family. This kinase mediates the signaling transduction induced by TGF beta and morphogenetic protein (BMP), and controls a variety of cell functions including transcription regulation and apoptosis. In response to IL-1, this protein forms a kinase complex including TRAF6, MAP3K7P1/TAB1 and MAP3K7P2/TAB2; this complex is required for the activation of nuclear factor kappa B. This kinase can also activate MAPK8/JNK, MAP2K4/MKK4, and thus plays a role in the cell response to environmental stresses. Four alternatively spliced transcript variants encoding distinct isoforms have been reported.

**抗原:** Fusion protein of human MAP3K7

**经过测试的应用:** ELISA, WB, IHC

**推荐稀释比:** IHC: 200-300;WB: 500-2000;ELISA: 5000-10000

**种属反应性:** Rabbit

**克隆性:** Rabbit Polyclonal

**亚型:** Immunogen-specific rabbit IgG

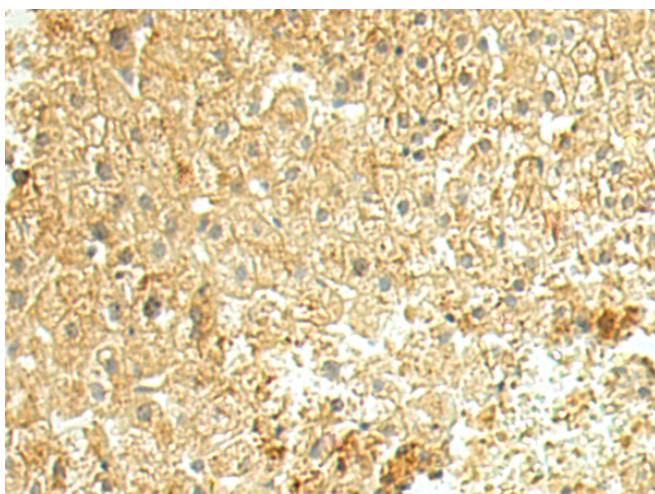
**纯化:** Antigen affinity purification

**种属反应性:** Human, Mouse, Rat

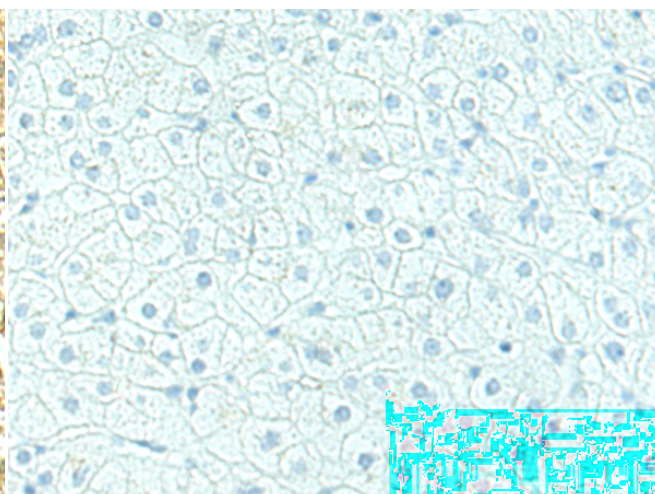
**成分:** PBS (without Mg<sup>2+</sup> and Ca<sup>2+</sup>), pH 7.4, 150 mM NaCl, 0.05% Sodium Azide and 40% glycerol

**研究领域:** Signal Transduction, Cardiovascular, Immunology

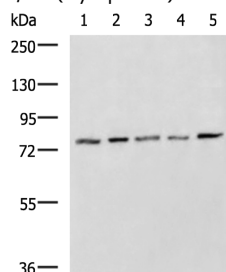
**储存和运输:** Store at -20°C. Avoid repeated freezing and thawing



Immunohistochemistry analysis of paraffin embedded Human liver cancer tissue using 217879(MAP3K7 Antibody) at a dilution of 1/150(Cytoplasm).



In comparison with the IHC on the left, the same paraffin-embedded Human liver cancer tissue is first treated with the fusion protein and then with 217879(Anti-MAP3K7 Antibody) at dilution 1/150.



Gel: 8%SDS-PAGE, Lysate: 40 µg;

Lane 1-5: 231, 293T, HepG2, Jurkat and K562 cell lysates;

Primary antibody: 217879(MAP3K7 Antibody) at dilution 1/1000;

Secondary antibody: HRP-conjugated Goat anti rabbit IgG at 1/5000 dilution;

Exposure time: 1 minute