

MAP3K10 RABBIT PAB

货号: S220090

产品全名: MAP3K10 兔多抗

基因符号: MST; MLK2; MEKK10

UNIPROT ID: Q02779 (Gene Accession - NP_002437)

背景: The protein encoded by this gene is a member of the serine/threonine kinase family. This kinase has been shown to activate MAPK8/JNK and MKK4/SEK1, and this kinase itself can be phosphorylated, and thus activated by JNK kinases. This kinase functions preferentially on the JNK signaling pathway, and is reported to be involved in nerve growth factor (NGF) induced neuronal apoptosis.

抗原: Synthetic peptide of human MAP3K10

经过测试的应用: ELISA, IHC

推荐稀释比: IHC: 50-200; ELISA: 5000-10000

种属反应性: Rabbit

克隆性: Rabbit Polyclonal

亚型: Immunogen-specific rabbit IgG

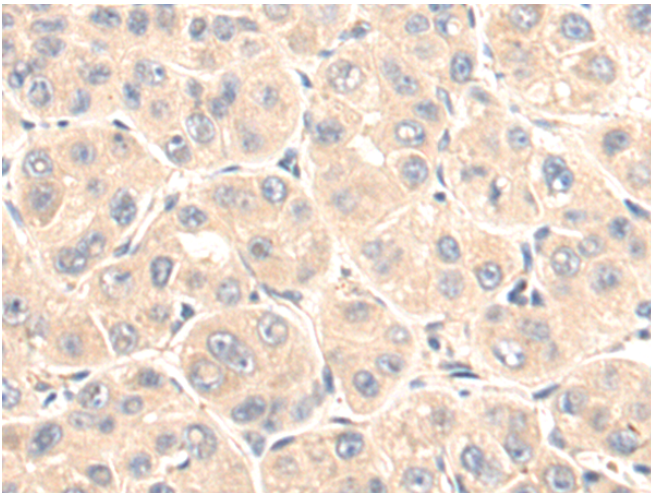
纯化: Antigen affinity purification

种属反应性: Human, Mouse, Rat

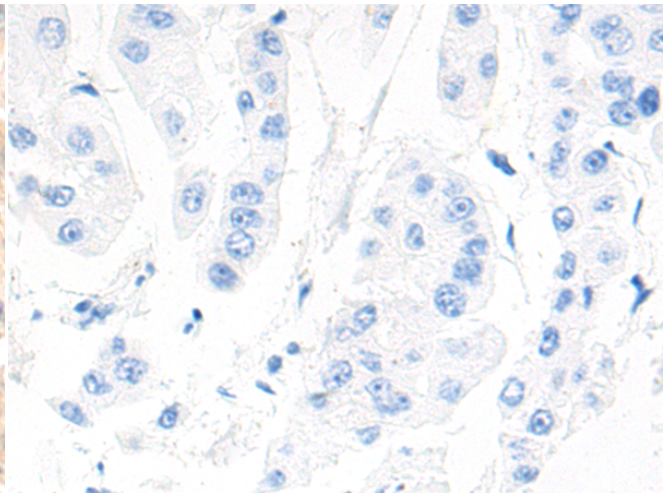
成分: PBS (without Mg²⁺ and Ca²⁺), pH 7.4, 150 mM NaCl, 0.05% Sodium Azide and 40% glycerol

研究领域: Metabolism, Signal Transduction, Cancer

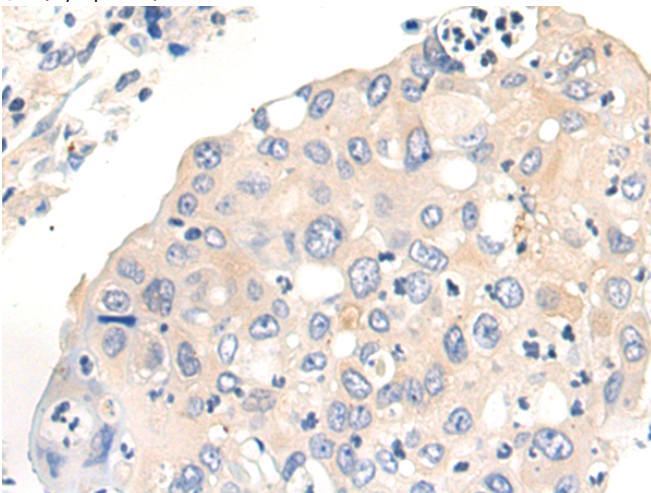
储存和运输: Store at -20°C. Avoid repeated freezing and thawing



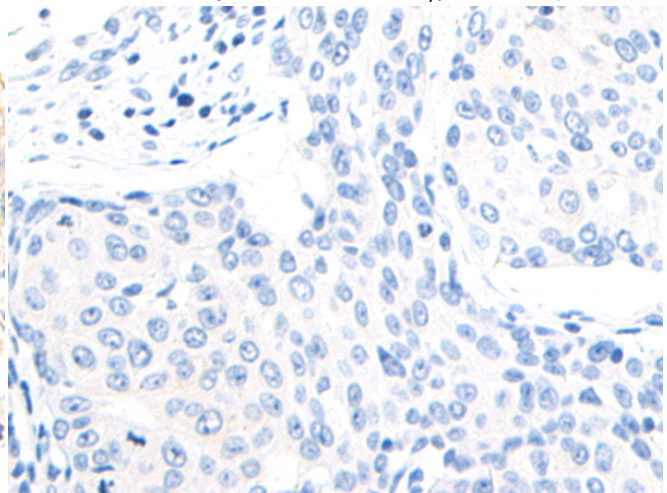
Immunohistochemistry analysis of paraffin embedded Human liver cancer tissue using 220090(MAP3K10 Antibody) at a dilution of 1/50(Cytoplasm).



In comparison with the IHC on the left, the same paraffin-embedded Human liver cancer tissue is first treated with the synthetic peptide and then with 220090(Anti-MAP3K10 Antibody) at dilution 1/50.



The image on the left is immunohistochemistry of paraffin-embedded Human bladder cancer tissue using 220090(Anti-MAP3K10 Antibody) at a dilution of 1/50.



In comparison with the IHC on the left, the same paraffin-embedded Human bladder cancer tissue is first treated with synthetic peptide and then with D260938(Anti-MAP3K10 Antibody) at dilution 1/50.



Product Description

Pioneering GTPase and Oncogene Product Development since 2010
