

MAP2K6 (8A11) MOUSE MAB

货号: N261158

产品全名: MAP2K6 (8A11) 小鼠单抗

基因符号 MAP2K6; MEK6; MKK6; PRKMK6; SKK3; Dual specificity mitogen-activated protein kinase kinase 6; MAP kinase kinase 6; MAPKK 6; MAPK/ERK kinase 6; MEK 6; Stress-activated protein kinase kinase 3; SAPK kinase 3; SAPKK-3; SAPKK3

UNIPROT ID: P52564

背景: This gene encodes a member of the dual specificity protein kinase family, which functions as a mitogen-activated protein (MAP) kinase kinase. MAP kinases, also known as extracellular signal-regulated kinases (ERKs), act as an integration point for multiple biochemical signals. This protein phosphorylates and activates p38 MAP kinase in response to inflammatory cytokines or environmental stress. As an essential component of p38 MAP kinase mediated signal transduction pathway, this gene is involved in many cellular processes such as stress induced cell cycle arrest, transcription activation and apoptosis. Tissue specificity: Isoform 2 is only expressed in skeletal muscle. Isoform 1, on the other hand, is found in skeletal muscle, heart, and in lesser extent in liver or pancreas.

抗原: Purified recombinant human MKK6 protein fragments expressed in E.coli.

经过测试的应用: WB,IP

推荐稀释比: WB: 1/500-1/1000 IP: 1/20

种属反应性: Mouse

克隆性: Mouse Monoclonal

克隆编号: 8A11-G11-G11

分子量: Calculated MW: 37 kDa; Observed MW: 40 kDa

亚型: IgG1

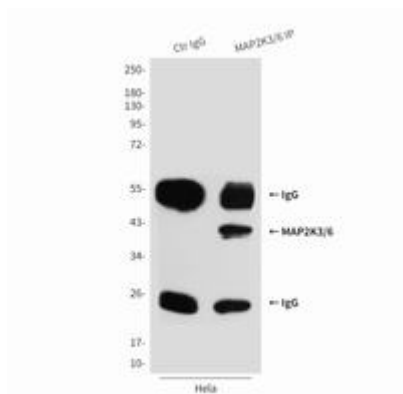
纯化: Affinity Purified

种属反应性: Human,Rat

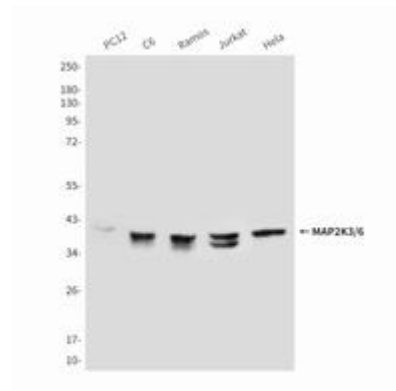
成分: PBS (without Mg²⁺ and Ca²⁺), pH 7.3 containing 50% glycerol, 0.5% BSA and 0.02% sodium azide

研究领域: Signal Transduction

储存和运输: Store at -20°C. Avoid repeated freezing and thawing



Immunoprecipitation analysis of MAP2K6 (8A11) in HeLa lysates using MKK3/6 antibody.



Western blot analysis of MAP2K6 (8A11) in PC-12, C6, Ramos, Jurkat and HeLa lysates using MKK3/6 antibody.