

## MAP2K1 RABBIT PAB

货号: S220160

产品全名: MAP2K1 兔多抗

基因符号: MEK1, MKK1, MAPKK1, PRKMK1

**UNIPROT ID:** Q02750 (Gene Accession - NP\_002746.1)

**背景:** The protein encoded by this gene is a member of the dual specificity protein kinase family, which acts as a mitogen-activated protein (MAP) kinase kinase. MAP kinases, also known as extracellular signal-regulated kinases (ERKs), act as an integration point for multiple biochemical signals. This protein kinase lies upstream of MAP kinases and stimulates the enzymatic activity of MAP kinases upon wide variety of extra- and intracellular signals. As an essential component of MAP kinase signal transduction pathway, this kinase is involved in many cellular processes such as proliferation, differentiation, transcription regulation and development.

**抗原:** Synthetic peptide of human MAP2K1

**经过测试的应用:** ELISA, WB, IHC

**推荐稀释比:** IHC: 25-100;WB: 500-2000;ELISA: 2000-5000

**种属反应性:** Rabbit

**克隆性:** Rabbit Polyclonal

**亚型:** Immunogen-specific rabbit IgG

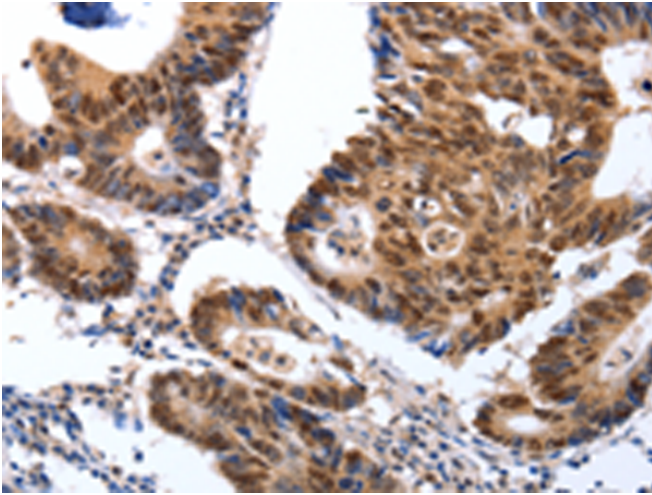
**纯化:** Antigen affinity purification

**种属反应性:** Human, Mouse, Rat

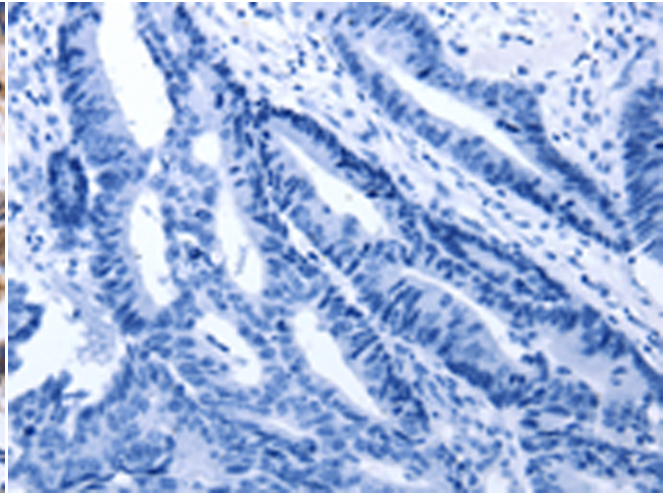
**成分:** PBS (without Mg<sup>2+</sup> and Ca<sup>2+</sup>), pH 7.4, 150 mM NaCl, 0.05% Sodium Azide and 40% glycerol

**研究领域:** Signal Transduction

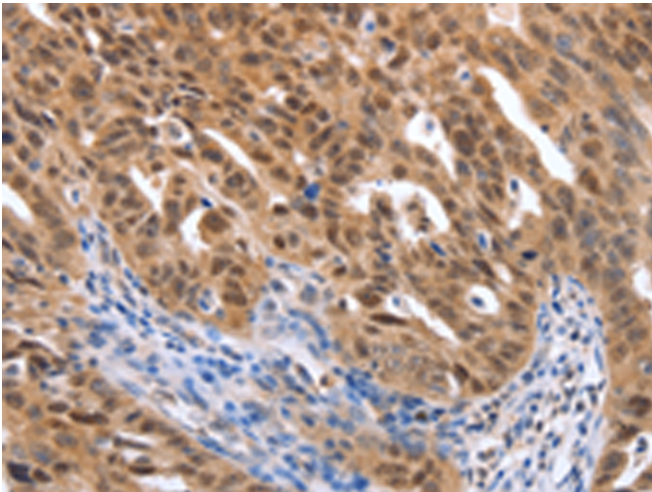
**储存和运输:** Store at -20°C. Avoid repeated freezing and thawing



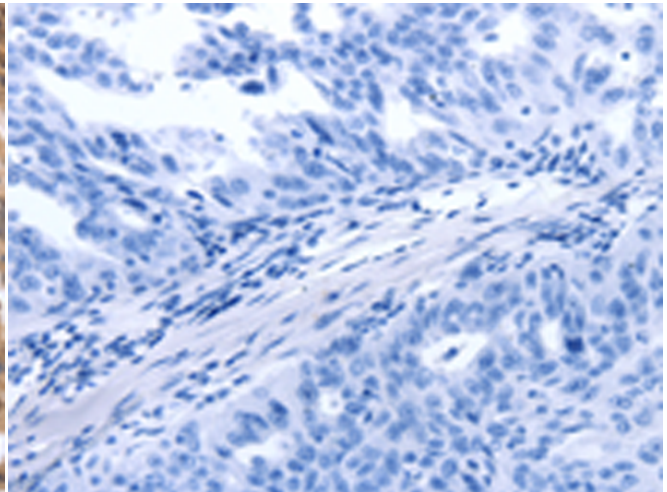
Immunohistochemistry analysis of paraffin embedded Human colon cancer tissue using 220160 (MAP2K1 Antibody) at a dilution of 1/25 (Cytoplasm, Nucleus).



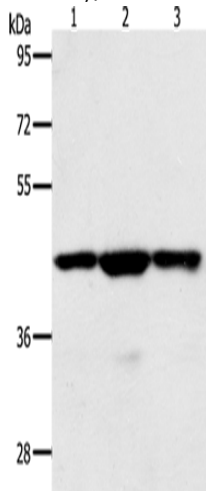
In comparison with the IHC on the left, the same paraffin-embedded Human colon cancer tissue is first treated with the synthetic peptide and then with 220160 (Anti-MAP2K1 Antibody) at dilution 1/25.



The image on the left is immunohistochemistry of paraffin-embedded Human ovarian cancer tissue using 220160 (Anti-MAP2K1 Antibody) at a dilution of 1/25.



In comparison with the IHC on the left, the same paraffin-embedded Human ovarian cancer tissue is first treated with synthetic peptide and then with D261061 (Anti-MAP2K1 Antibody) at dilution 1/25.



Gel: 10% SDS-PAGE, Lysate: 40 µg;  
Lane 1-3: Jurkat cells, hela cells, K562 cells;  
Primary antibody: 220160 (MAP2K1 Antibody) at dilution 1/400;  
Secondary antibody: Goat anti rabbit IgG at 1/8000 dilution;  
Exposure time: 20 seconds



# Product Description

Pioneering GTPase and Oncogene Product Development since 2010

---