

MAP2 RABBIT PAB

货号: S217978

产品全名: MAP2 兔多抗

基因符号: MAP-2; MAP2A; MAP2B; MAP2C

UNIPROT ID: P11137 (Gene Accession - BC038857)

背景: This gene encodes a protein that belongs to the microtubule-associated protein family. The proteins of this family are thought to be involved in microtubule assembly, which is an essential step in neurogenesis. The products of similar genes in rat and mouse are neuron-specific cytoskeletal proteins that are enriched in dendrites, implicating a role in determining and stabilizing dendritic shape during neuron development. A number of alternatively spliced variants encoding distinct isoforms have been described.

抗原: Fusion protein of human MAP2

经过测试的应用: ELISA, WB, IHC

推荐稀释比: IHC: 100-300;WB: 1000-5000;ELISA: 5000-10000

种属反应性: Rabbit

克隆性: Rabbit Polyclonal

亚型: Immunogen-specific rabbit IgG

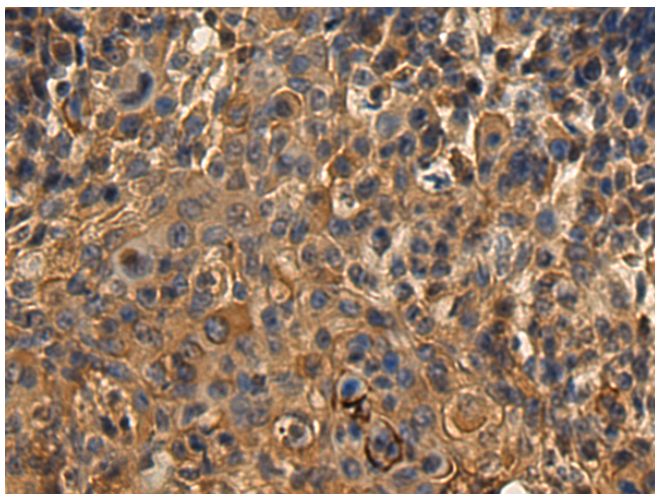
纯化: Antigen affinity purification

种属反应性: Human, Mouse, Rat

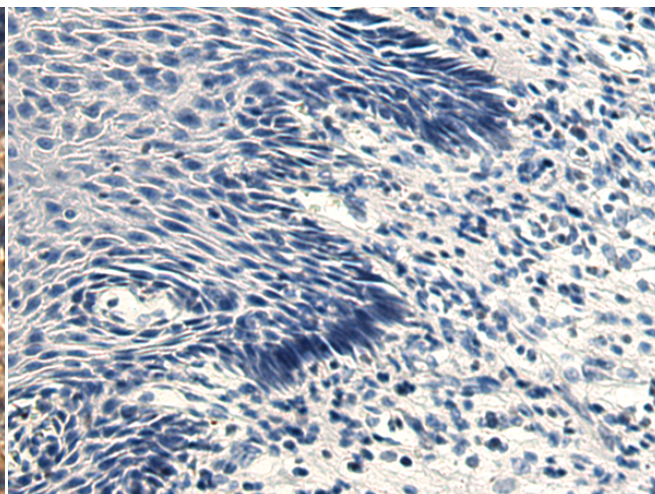
成分: PBS (without Mg²⁺ and Ca²⁺), pH 7.4, 150 mM NaCl, 0.05% Sodium Azide and 40% glycerol

研究领域: Signal Transduction, Neuroscience, Stem Cells

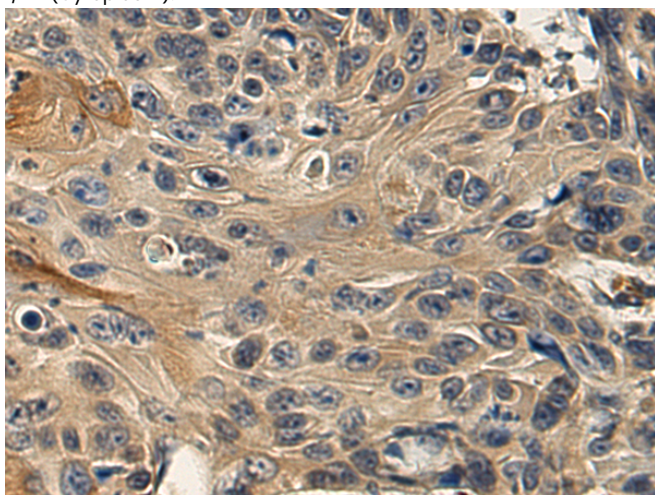
储存和运输: Store at -20°C. Avoid repeated freezing and thawing



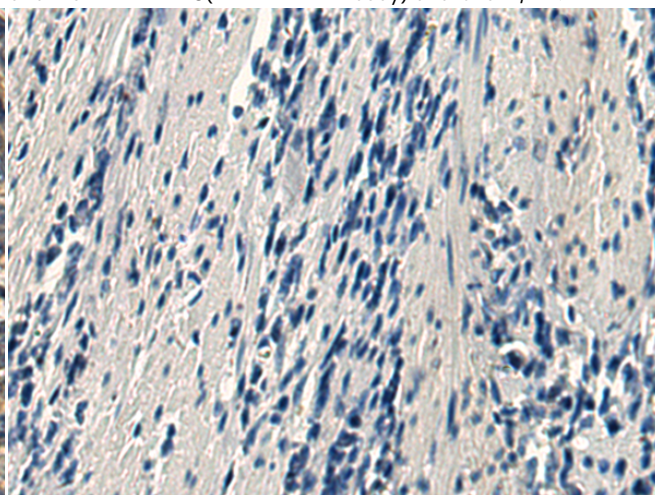
Immunohistochemistry analysis of paraffin embedded Human thyroid cancer tissue using 217978 (MAP2 Antibody) at a dilution of 1/100 (Cytoplasm).



In comparison with the IHC on the left, the same paraffin-embedded Human thyroid cancer tissue is first treated with the fusion protein and then with 217978 (Anti-MAP2 Antibody) at dilution 1/100.

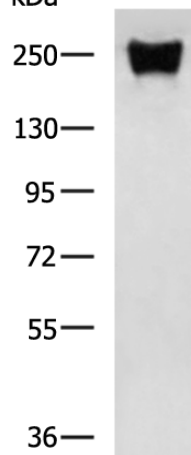


The image on the left is immunohistochemistry of paraffin-embedded Human esophagus cancer tissue using 217978 (Anti-MAP2 Antibody) at a dilution of 1/100.



In comparison with the IHC on the left, the same paraffin-embedded Human esophagus cancer tissue is first treated with fusion protein and then with D223483 (Anti-MAP2 Antibody) at dilution 1/100.

kDa



Gel: 6% SDS-PAGE, Lysate: 40 µg;
 Lane: Mouse brain tissue lysate;
 Primary antibody: 217978 (MAP2 Antibody) at dilution 1/700;
 Secondary antibody: HRP-conjugated Goat anti rabbit IgG at 1/5000 dilution;
 Exposure time: 3 minutes



Product Description

Pioneering GTPase and Oncogene Product Development since 2010
