

MAGEB5 RABBIT PAB

货号: S221463

产品全名: MAGEB5 兔多抗

基因符号: CT3.3; MAGE-B5

UNIPROT ID: Q9BZ81 (Gene Accession - NP_001258681)

背景: The melanoma-associated antigen (MAGE) family consists of a number of antigens recognized by cytotoxic T lymphocytes. The MAGE genes were initially isolated from different kinds of tumors and, based on their virtually exclusive tumor-specific expression in adult tissues, they have been used as targets for cancer immunotherapy. MAGE genes encode for tumor-rejection antigens that are expressed in tumors of different histologic types and in normal testis and placenta. MAGE-B5 (melanoma-associated antigen B5), also known as CT3.3 (cancer/testis antigen 3.3), is a 275 amino acid protein that contains one MAGE domain and is expressed in testis. The gene encoding MAGE-B5 maps to human chromosome X, which consists of about 153 million base pairs and nearly 1,000 genes. Color blindness, hemophilia and Duchenne muscular dystrophy are well known X chromosome-linked conditions which affect males more frequently, as males carry a single X chromosome.

抗原: Synthetic peptide of human MAGEB5

经过测试的应用: ELISA, IHC

推荐稀释比: IHC: 20-100; ELISA: 5000-10000

种属反应性: Rabbit

克隆性: Rabbit Polyclonal

亚型: Immunogen-specific rabbit IgG

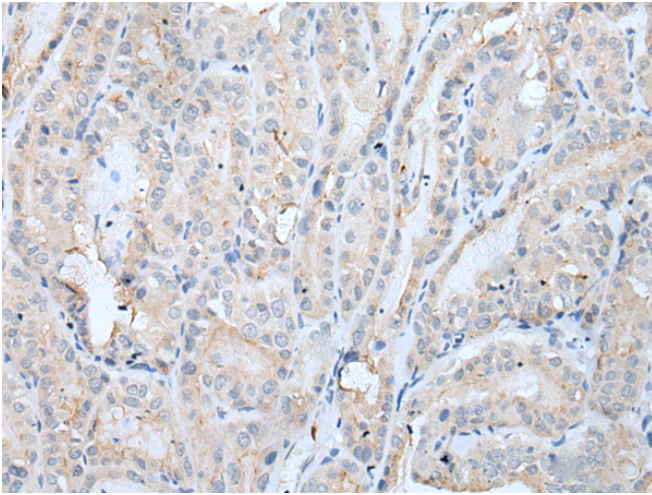
纯化: Antigen affinity purification

种属反应性: Human

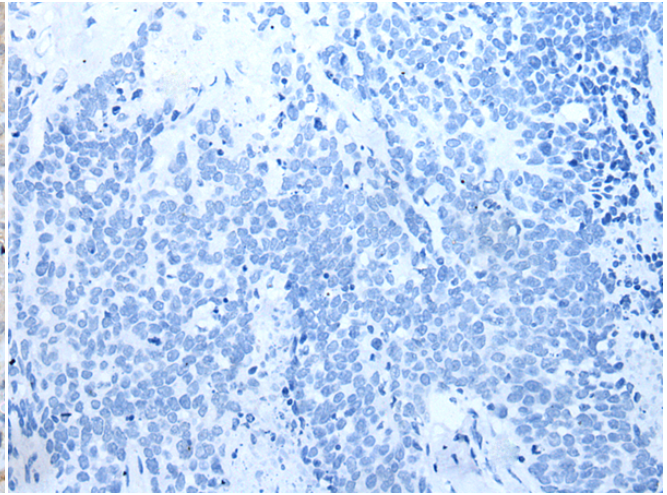
成分: PBS (without Mg²⁺ and Ca²⁺), pH 7.4, 150 mM NaCl, 0.05% Sodium Azide and 40% glycerol

研究领域: Cancer

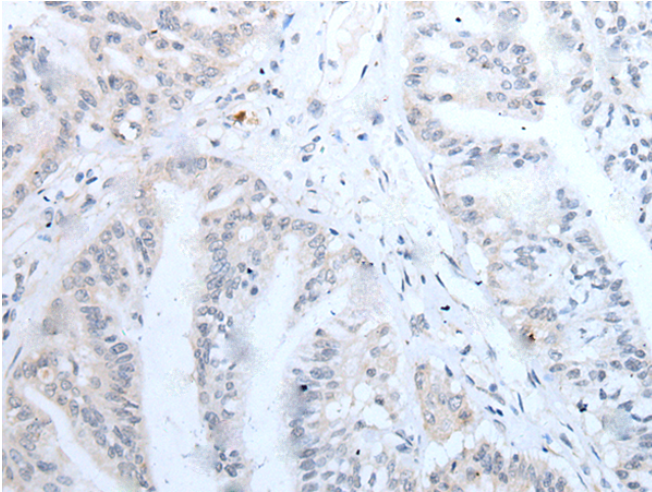
储存和运输: Store at -20°C. Avoid repeated freezing and thawing



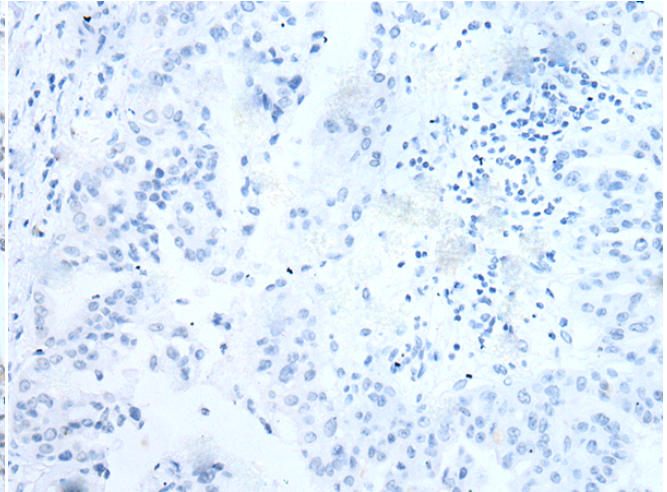
Immunohistochemistry analysis of paraffin embedded Human thyroid cancer tissue using 221463(MAGEB5 Antibody) at a dilution of 1/20(Cytoplasm and Cell membrane).



In comparison with the IHC on the left, the same paraffin-embedded Human thyroid cancer tissue is first treated with the synthetic peptide and then with 221463(Anti-MAGEB5 Antibody) at dilution 1/20.



The image on the left is immunohistochemistry of paraffin-embedded Human liver cancer tissue using 221463(Anti-MAGEB5 Antibody) at a dilution of 1/20.



In comparison with the IHC on the left, the same paraffin-embedded Human liver cancer tissue is first treated with synthetic peptide and then with D263064(Anti-MAGEB5 Antibody) at dilution 1/20.