

## MAGEA1 RABBIT PAB

货号: S221281

产品全名: MAGEA1 兔多抗

基因符号: CT11; MAGE1

**UNIPROT ID:** P43355 (Gene Accession - NP\_004979)

**背景:** This gene is a member of the MAGEA gene family. The members of this family encode proteins with 50 to 80% sequence identity to each other. The promoters and first exons of the MAGEA genes show considerable variability, suggesting that the existence of this gene family enables the same function to be expressed under different transcriptional controls. The MAGEA genes are clustered at chromosomal location Xq28. They have been implicated in some hereditary disorders, such as dyskeratosis congenita.

**抗原:** Synthetic peptide of human MAGEA1

**经过测试的应用:** ELISA, IHC

**推荐稀释比:** IHC: 50-300; ELISA: 5000-10000

**种属反应性:** Rabbit

**克隆性:** Rabbit Polyclonal

**亚型:** Immunogen-specific rabbit IgG

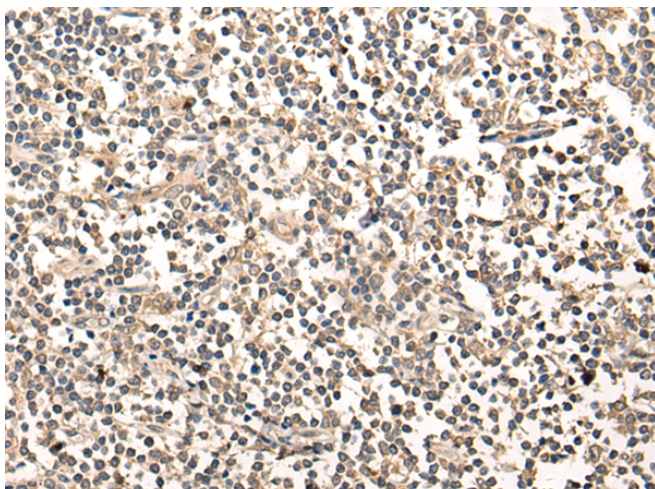
**纯化:** Antigen affinity purification

**种属反应性:** Human

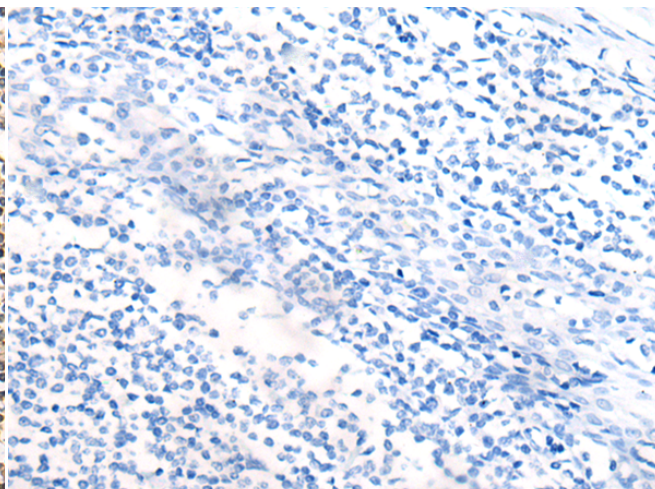
**成分:** PBS (without Mg<sup>2+</sup> and Ca<sup>2+</sup>), pH 7.4, 150 mM NaCl, 0.05% Sodium Azide and 40% glycerol

**研究领域:** Cancer

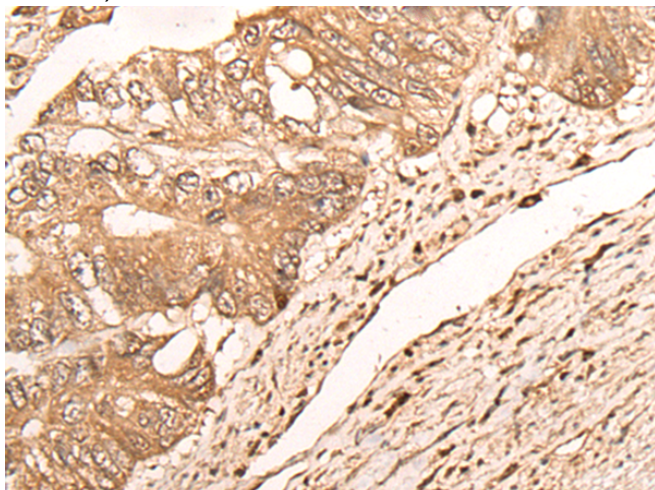
**储存和运输:** Store at -20°C. Avoid repeated freezing and thawing



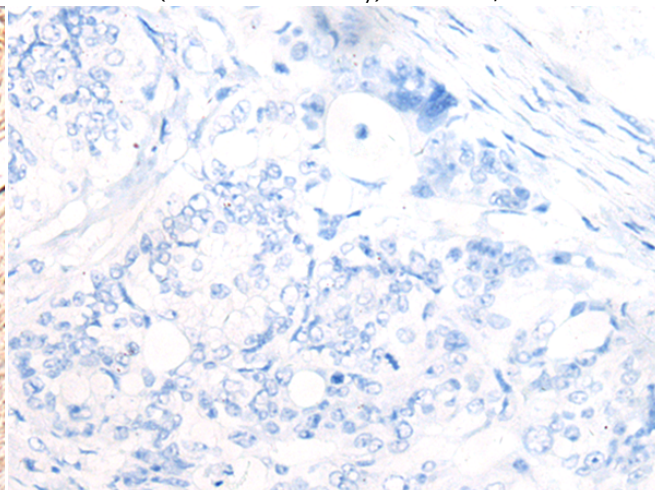
Immunohistochemistry analysis of paraffin embedded Human tonsil tissue using 221281(MAGEA1 Antibody) at a dilution of 1/65(Cytoplasm or Nucleus).



In comparison with the IHC on the left, the same paraffin-embedded Human tonsil tissue is first treated with the synthetic peptide and then with 221281(Anti-MAGEA1 Antibody) at dilution 1/65.



The image on the left is immunohistochemistry of paraffin-embedded Human colorectal cancer tissue using 221281(Anti-MAGEA1 Antibody) at a dilution of 1/65.



In comparison with the IHC on the left, the same paraffin-embedded Human colorectal cancer tissue is first treated with synthetic peptide and then with D262804(Anti-MAGEA1 Antibody) at dilution 1/65.



# Product Description

Pioneering GTPase and Oncogene Product Development since 2010

---