

MAD2L2 RABBIT PAB

货号: N225906

产品全名: MAD2L2 兔多抗

基因符号 REV7; FANCV; MAD2B; POLZ2

UNIPROT ID: Q9UI95

背景: Adapter protein able to interact with different proteins and involved in different biological processes. Mediates the interaction between the error-prone DNA polymerase zeta catalytic subunit REV3L and the inserter polymerase REV1, thereby mediating the second polymerase switching in translesion DNA synthesis.

抗原: A synthesized peptide derived from human Mad2L2

经过测试的应用: WB,IHC-P,ICC/IF,IP,FC

推荐稀释比: WB: 1/500-1/1000 IHC: 1/50-1/100 IF: 1/50-1/200 IP: 1/20 FC: 1/50-1/100

种属反应性: Rabbit

克隆性: Rabbit Polyclonal

分子量: Calculated MW: 24 kDa; Observed MW: 24 kDa

亚型: IgG

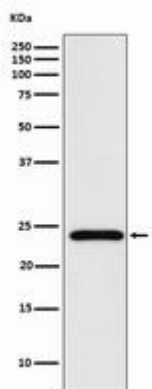
纯化: Affinity Chromatography

种属反应性: Human, Mouse and Rat

成分: PBS (without Mg²⁺ and Ca²⁺), pH 7.3 containing 50% glycerol, 0.5% BSA and 0.02% sodium azide

研究领域: Cell Biology

储存和运输: Store at -20°C. Avoid repeated freezing and thawing



Western blot analysis of Mad2L2 in HeLa lysates using MAD2L2 antibody.



Product Description

Pioneering GTPase and Oncogene Product Development since 2010
