

## MAD2L2 RABBIT MAB

货号: N262484

产品全名: MAD2L2 兔单克隆抗体

基因符号 REV7; FANCV; MAD2B; POLZ2

**UNIPROT ID:** Q9UI95

背景: Adapter protein able to interact with different proteins and involved in different biological processes. Mediates the interaction between the error-prone DNA polymerase zeta catalytic subunit REV3L and the inserter polymerase REV1, thereby mediating the second polymerase switching in translesion DNA synthesis.

抗原: A synthetic peptide of human Mad2L2

经过测试的应用: WB, ICC/IF, IP

推荐稀释比: WB: 1/500-1/1000 IF: 1/50-1/200 IP: 1/20

种属反应性: Rabbit

克隆性: Rabbit Monoclonal

克隆编号: R08-7E2

分子量: Calculated MW: 24 kDa; Observed MW: 24 kDa

亚型: IgG

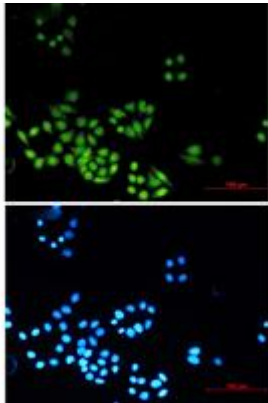
纯化: Affinity Purified

种属反应性: Human

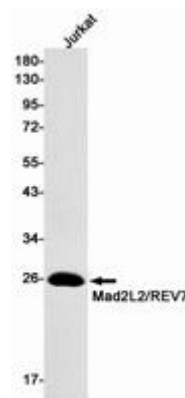
成分: PBS (without Mg<sup>2+</sup> and Ca<sup>2+</sup>), pH 7.3 containing 50% glycerol, 0.5% BSA and 0.02% sodium azide

研究领域: Cell Biology

储存和运输: Store at -20°C. Avoid repeated freezing and thawing



Immunocytochemistry analysis of Mad2L2/REV7 (green) in HeLa using Mad2L2/REV7 antibody, and DAPI (blue)



Western blot analysis of Mad2L2/REV7 in Jurkat lysates using MAD2L2 antibody.