

## LYVE1 RABBIT PAB

货号: S216625

产品全名: LYVE1 兔多抗

基因符号: HAR; XLKDI; LYVE-1; CRSBP-1

**UNIPROT ID:** Q9Y5Y7 (Gene Accession - BC026231)

背景: This gene encodes a type I integral membrane glycoprotein. The encoded protein acts as a receptor and binds to both soluble and immobilized hyaluronan. This protein may function in lymphatic hyaluronan transport and have a role in tumor metastasis.

抗原: Fusion protein of human LYVE1

经过测试的应用: ELISA, WB, IHC

推荐稀释比: IHC: 50-200;WB: 1000-5000;ELISA: 5000-10000

种属反应性: Rabbit

克隆性: Rabbit Polyclonal

亚型: Immunogen-specific rabbit IgG

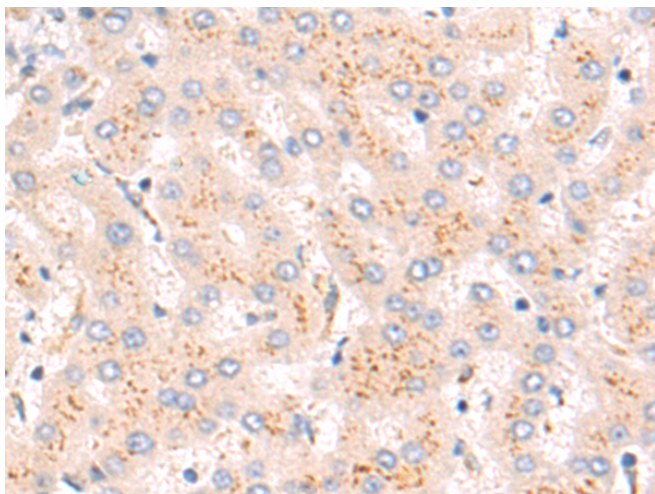
纯化: Antigen affinity purification

种属反应性: Human

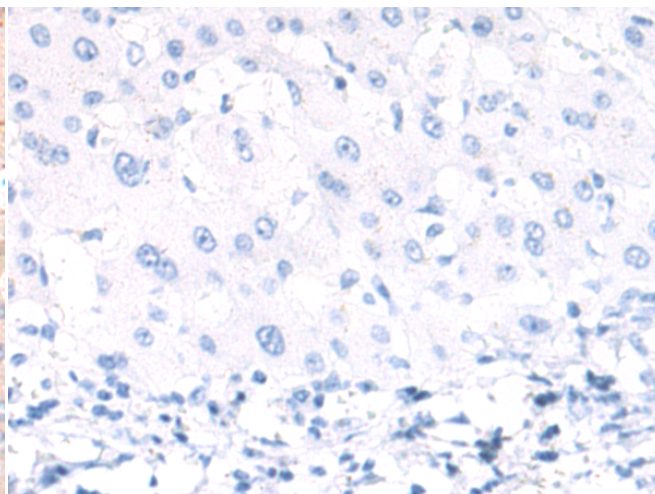
成分: PBS (without Mg<sup>2+</sup> and Ca<sup>2+</sup>), pH 7.4, 150 mM NaCl, 0.05% Sodium Azide and 40% glycerol

研究领域: Cardiovascular

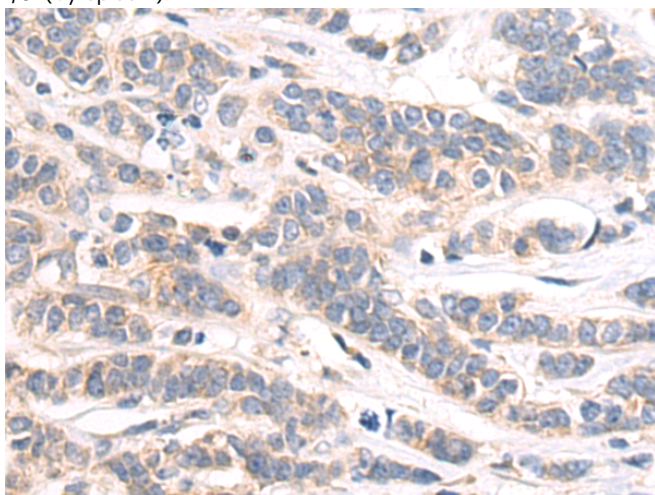
储存和运输: Store at -20°C. Avoid repeated freezing and thawing



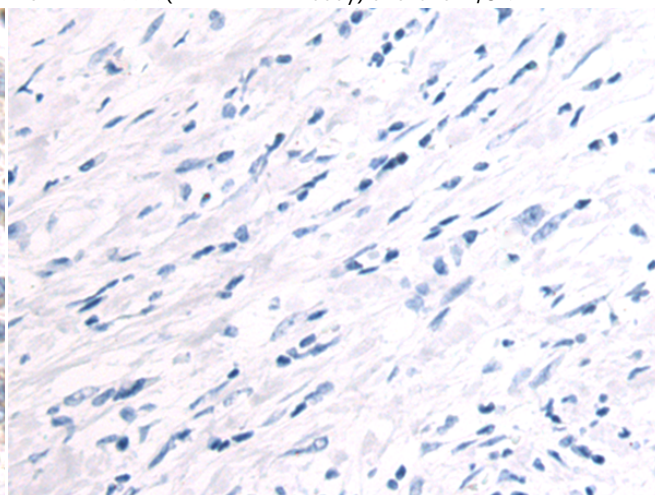
Immunohistochemistry analysis of paraffin embedded Human liver cancer tissue using 216625(LYVE1 Antibody) at a dilution of 1/80(Cytoplasm).



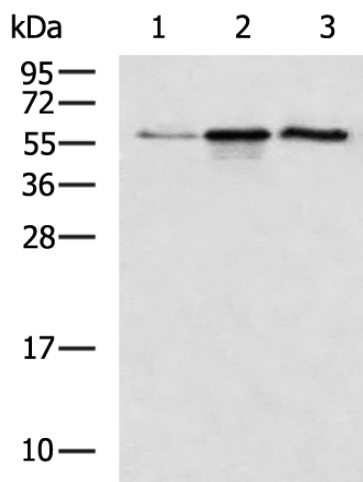
In comparison with the IHC on the left, the same paraffin-embedded Human liver cancer tissue is first treated with the fusion protein and then with 216625(Anti-LYVE1 Antibody) at dilution 1/80.



The image on the left is immunohistochemistry of paraffin-embedded Human breast cancer tissue using 216625(Anti-LYVE1 Antibody) at a dilution of 1/80.



In comparison with the IHC on the left, the same paraffin-embedded Human breast cancer tissue is first treated with fusion protein and then with D220937(Anti-LYVE1 Antibody) at dilution 1/80.



Gel: 12%SDS-PAGE, Lysate: 40 µg;  
 Lane 1-3: HepG2, 293T and Raji cell lysates;  
 Primary antibody: 216625(LYVE1 Antibody) at dilution 1/1200;  
 Secondary antibody: HRP-conjugated Goat anti rabbit IgG at 1/5000 dilution;  
 Exposure time: 15 seconds



# Product Description

Pioneering GTPase and Oncogene Product Development since 2010

---