

LYSOZYME RABBIT PAB

货号: N226062

产品全名: Lysozyme 兔多抗

基因符号 LZM; LYZF1

UNIPROT ID: P61626

背景: Lysozymes have primarily a bacteriolytic function; those in tissues and body fluids are associated with the monocyte-macrophage system and enhance the activity of immunoagents.

抗原: A synthetic peptide of human Lysozyme

经过测试的应用: WB,IHC-P

推荐稀释比: WB: 1/500-1/1000 IHC: 1/50-1/100

种属反应性: Rabbit

克隆性: Rabbit Polyclonal

分子量: Calculated MW: 17 kDa; Observed MW: 17 kDa

亚型: IgG

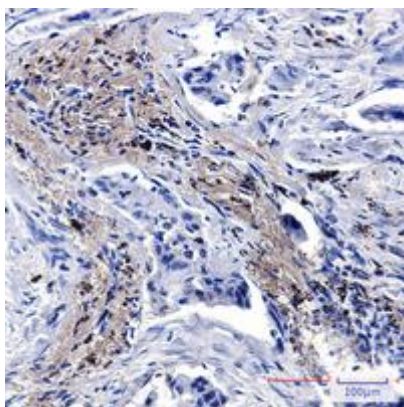
纯化: Affinity Purified

种属反应性: Human

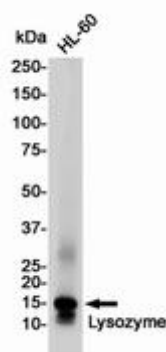
成分: PBS (without Mg²⁺ and Ca²⁺), pH 7.3 containing 50% glycerol, 0.5% BSA and 0.02% sodium azide

研究领域: Cell Biology

储存和运输: Store at -20°C. Avoid repeated freezing and thawing



Immunohistochemistry analysis of paraffin-embedded Human lung cancer using Lysozyme antibody. High-pressure and temperature Sodium Citrate pH 6.0 was used for antigen retrieval.



Western blot analysis of Lysozyme in HL-60 lysates using Lysozyme antibody.



Product Description

Pioneering GTPase and Oncogene Product Development since 2010
